

IN JOINT VENTURE



THE
ESTATE OFFICE
SHOREDITCH
LAND & BUILDINGS
SINCE 1966

**THE
STAGE.
EC2**
SHOREDITCH

412 private apartments
offering one of the Capital's
most distinguished & luxurious
lifestyle opportunities.

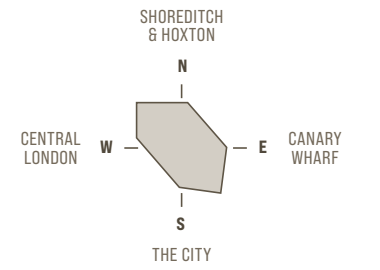
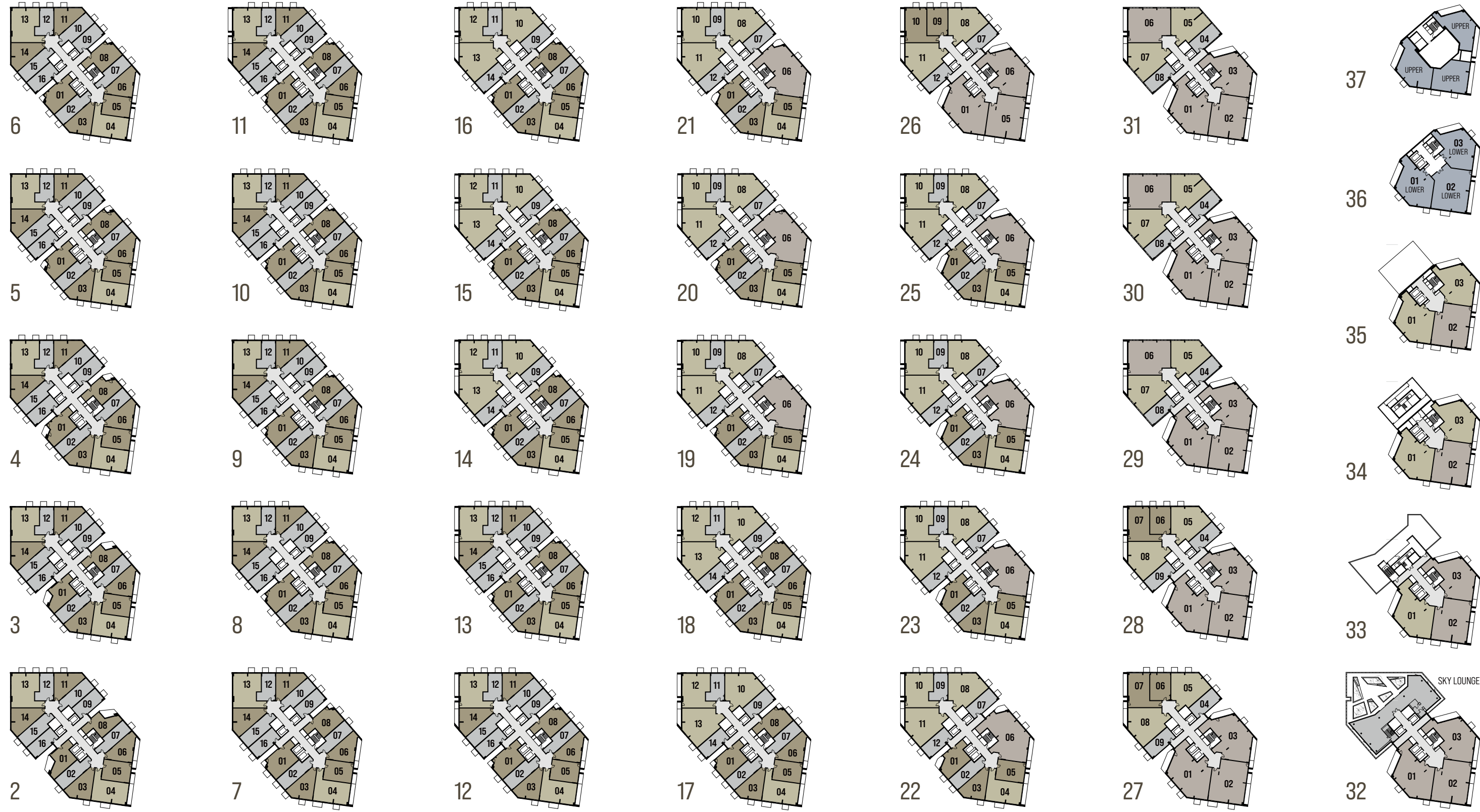




The Stage rises 37 levels to grace London's iconic skyline while providing an everchanging panorama of breathtaking views from dawn to dusk.

2-37

APARTMENT TYPE OVERVIEW



The Stage comprises highly specified suites, 1, 2 & 3 bedroom apartments together with three 4 bedroom duplex penthouses crowning the two upper levels.

Each apartment has one or more private balconies or a balcony/terrace combination.

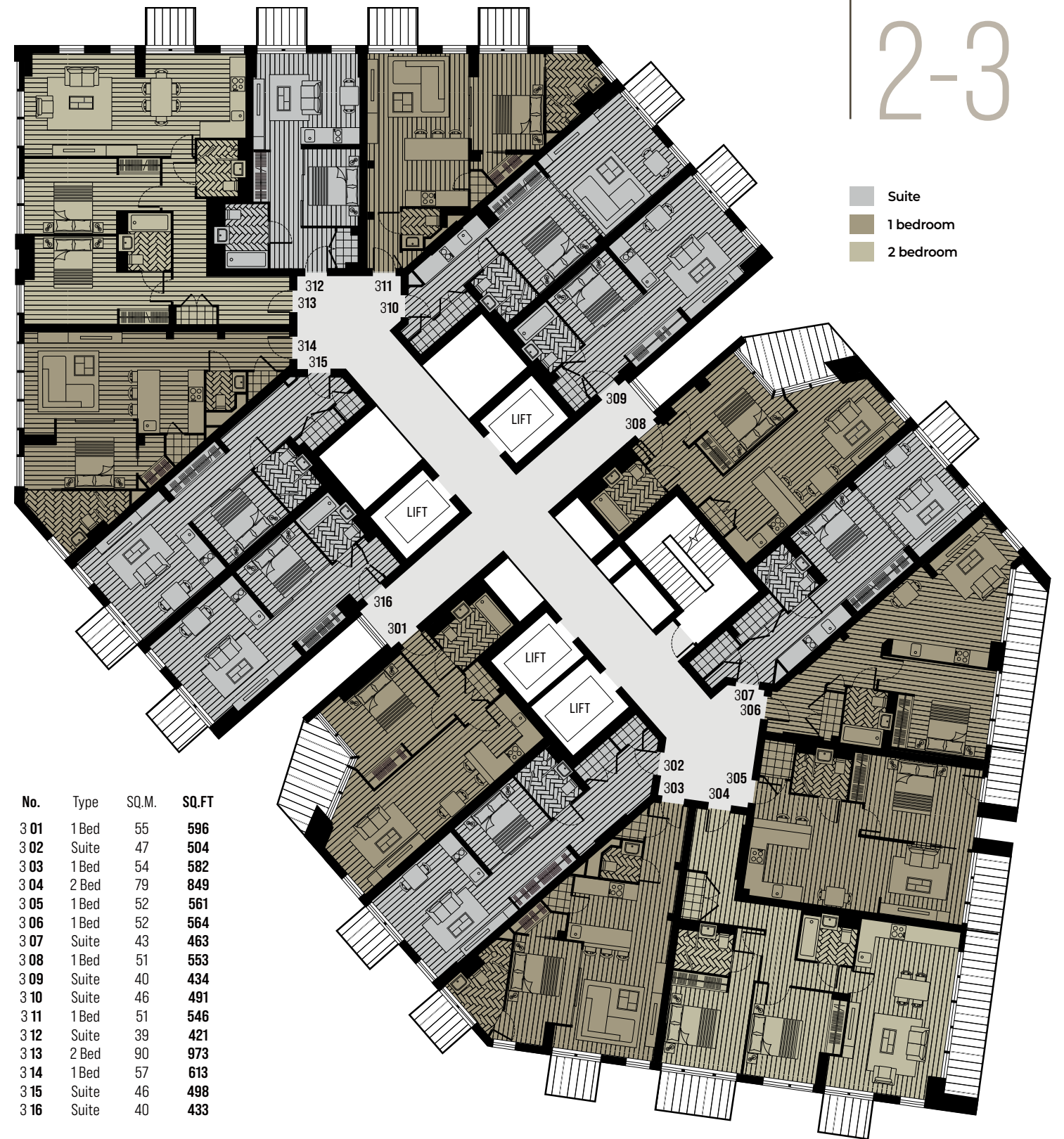
The tower incorporates an exclusive residents' sky lounge at level 32 with a further array of fabulous lifestyle facilities located within the lower basement levels.

- Suite
- 1 bedroom apartment
- 2 bedroom apartment
- 3 bedroom apartment
- 4 bedroom duplex penthouse

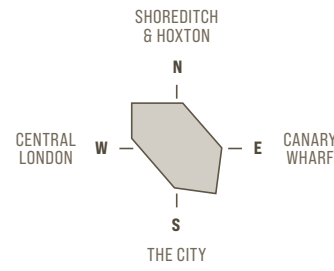


No.	Type	SQ.M.	SQ.FT
2 01	1 Bed	52	554
2 02	Suite	46	495
2 03	1 Bed	54	582
2 04	2 Bed	79	849
2 05	1 Bed	52	561
2 06	1 Bed	52	564
2 07	Suite	44	468
2 08	1 Bed	47	508
2 09	Suite	40	434
2 10	Suite	46	493
2 11	1 Bed	51	546
2 12	Suite	39	421
2 13	2 Bed	90	973
2 14	1 Bed	57	613
2 15	Suite	46	498
2 16	Suite	40	433

Apartment layouts are intended to be correct, precise details may vary, furniture shown for illustrative purposes only. Total areas are accurate to within 5%.

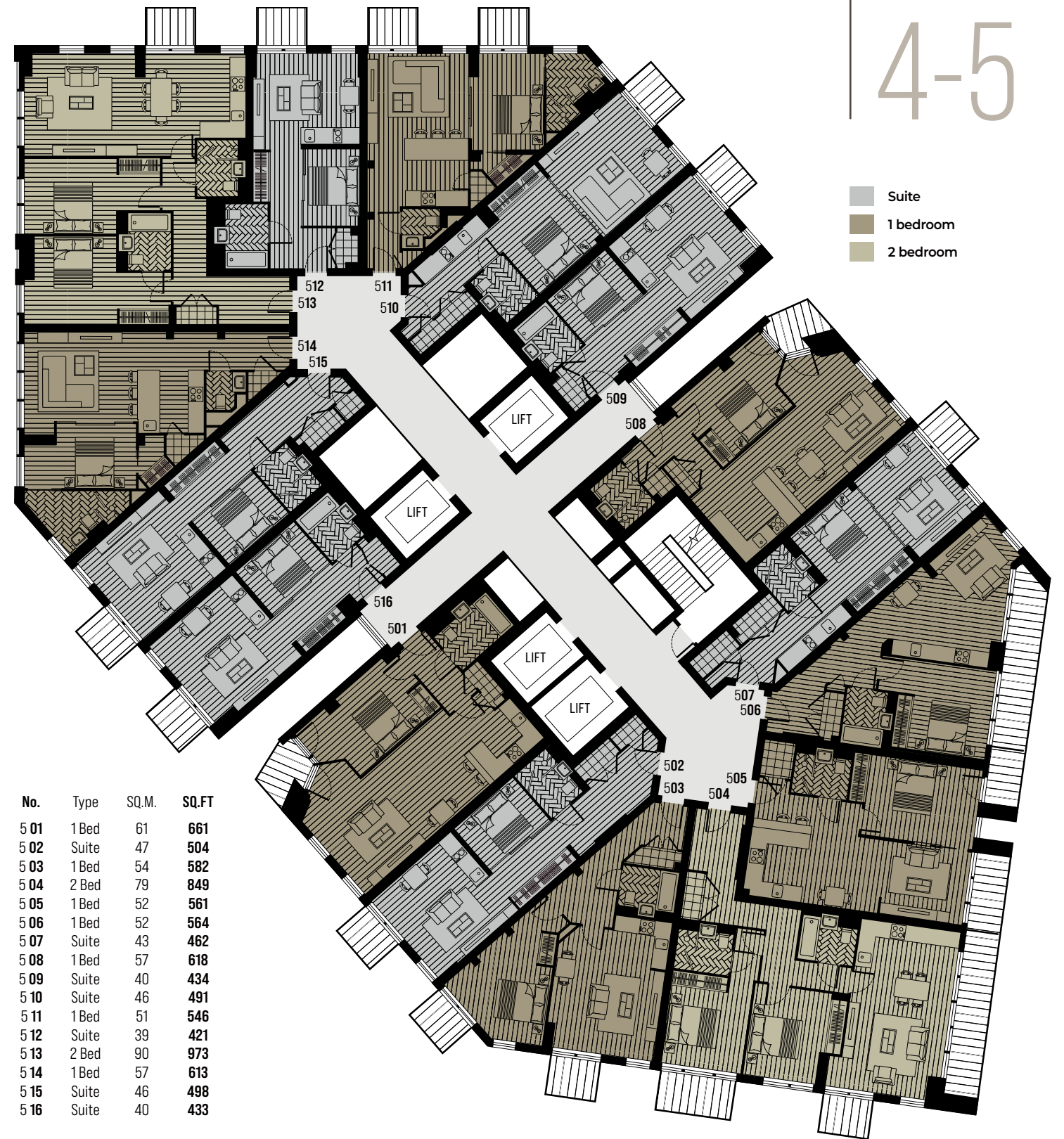


No.	Type	SQ.M.	SQ.FT
3 01	1 Bed	55	596
3 02	Suite	47	504
3 03	1 Bed	54	582
3 04	2 Bed	79	849
3 05	1 Bed	52	561
3 06	1 Bed	52	564
3 07	Suite	43	463
3 08	1 Bed	51	553
3 09	Suite	40	434
3 10	Suite	46	491
3 11	1 Bed	51	546
3 12	Suite	39	421
3 13	2 Bed	90	973
3 14	1 Bed	57	613
3 15	Suite	46	498
3 16	Suite	40	433



No.	Type	SQ.M.	SQ.FT
4 01	1 Bed	59	636
4 02	Suite	47	504
4 03	1 Bed	54	582
4 04	2 Bed	79	849
4 05	1 Bed	52	561
4 06	1 Bed	52	564
4 07	Suite	43	462
4 08	1 Bed	55	589
4 09	Suite	40	434
4 10	Suite	46	493
4 11	1 Bed	51	546
4 12	Suite	39	421
4 13	2 Bed	90	973
4 14	1 Bed	57	613
4 15	Suite	46	498
4 16	Suite	40	433

Apartment layouts are intended to be correct, precise details may vary, furniture shown for illustrative purposes only. Total areas are accurate to within 5%.



4-5

- Suite
- 1 bedroom
- 2 bedroom

No.	Type	SQ.M.	SQ.FT
5 01	1 Bed	61	661
5 02	Suite	47	504
5 03	1 Bed	54	582
5 04	2 Bed	79	849
5 05	1 Bed	52	561
5 06	1 Bed	52	564
5 07	Suite	43	462
5 08	1 Bed	57	618
5 09	Suite	40	434
5 10	Suite	46	491
5 11	1 Bed	51	546
5 12	Suite	39	421
5 13	2 Bed	90	973
5 14	1 Bed	57	613
5 15	Suite	46	498
5 16	Suite	40	433

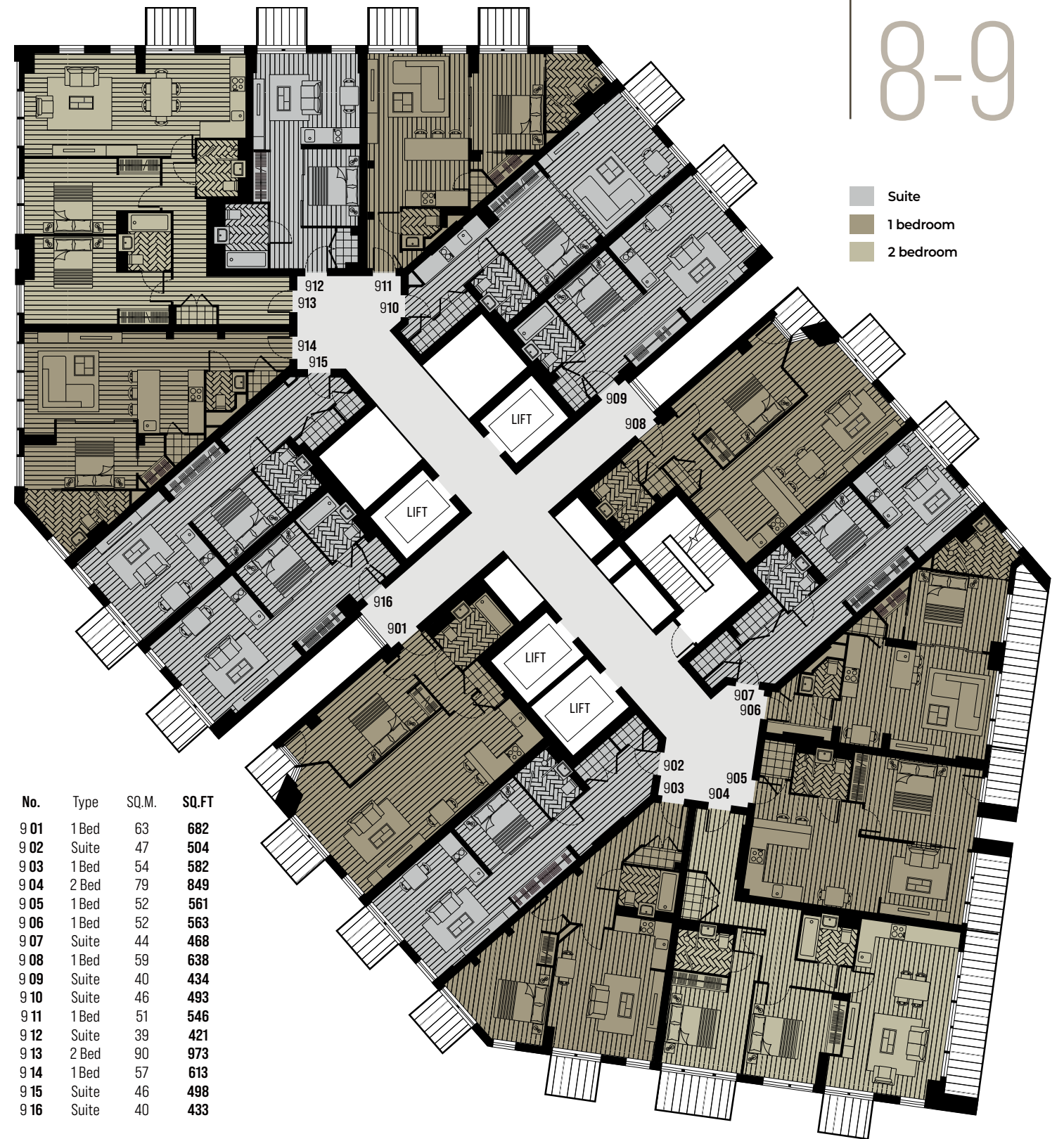


Apartment layouts are intended to be correct, precise details may vary, furniture shown for illustrative purposes only. Total areas are accurate to within 5%.





Apartment layouts are intended to be correct, precise details may vary, furniture shown for illustrative purposes only. Total areas are accurate to within 5%.





No.	Type	SQ.M.	SQ.FT
10 01	1 Bed	63	682
10 02	Suite	47	504
10 03	1 Bed	54	582
10 04	2 Bed	79	849
10 05	1 Bed	52	561
10 06	1 Bed	52	564
10 07	Suite	44	468
10 08	1 Bed	59	638
10 09	Suite	43	464
10 10	Suite	46	493
10 11	1 Bed	51	546
10 12	Suite	39	421
10 13	2 Bed	90	973
10 14	1 Bed	57	613
10 15	Suite	46	498
10 16	Suite	40	433



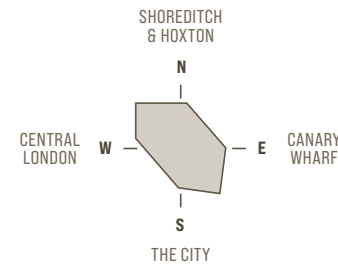
No.	Type	SQ.M.	SQ.FT
11 01	1 Bed	63	682
11 02	Suite	47	504
11 03	1 Bed	54	582
11 04	2 Bed	79	849
11 05	1 Bed	52	561
11 06	1 Bed	52	564
11 07	Suite	44	468
11 08	1 Bed	59	638
11 09	Suite	40	434
11 10	Suite	46	493
11 11	1 Bed	51	546
11 12	Suite	39	421
11 13	2 Bed	90	973
11 14	1 Bed	57	613
11 15	Suite	46	498
11 16	Suite	40	433

10-11

- Suite
- 1 bedroom
- 2 bedroom

Apartment layouts are intended to be correct, precise details may vary, furniture shown for illustrative purposes only. Total areas are accurate to within 5%.

12-13



No.	Type	SQ.M.	SQ.FT
12 01	1 Bed	63	682
12 02	Suite	47	504
12 03	1 Bed	54	582
12 04	2 Bed	79	849
12 05	1 Bed	52	561
12 06	1 Bed	52	564
12 07	Suite	44	468
12 08	1 Bed	59	638
12 09	Suite	40	434
12 10	Suite	46	493
12 11	1 Bed	51	546
12 12	Suite	39	421
12 13	2 Bed	90	973
12 14	1 Bed	57	613
12 15	Suite	46	498
12 16	Suite	40	433

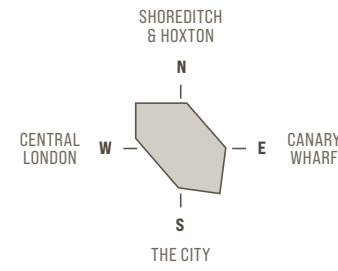


No.	Type	SQ.M.	SQ.FT
13 01	1 Bed	63	682
13 02	Suite	47	504
13 03	1 Bed	54	582
13 04	2 Bed	79	849
13 05	1 Bed	52	561
13 06	1 Bed	52	564
13 07	Suite	44	468
13 08	1 Bed	59	638
13 09	Suite	40	434
13 10	Suite	46	493
13 11	1 Bed	51	546
13 12	Suite	39	421
13 13	2 Bed	90	973
13 14	1 Bed	57	613
13 15	Suite	46	498
13 16	Suite	40	433

- Suite
- 1 bedroom
- 2 bedroom

Apartment layouts are intended to be correct, precise details may vary, furniture shown for illustrative purposes only. Total areas are accurate to within 5%.

14-15



No.	Type	SQ.M.	SQ.FT
14 01	1 Bed	63	682
14 02	Suite	47	504
14 03	1 Bed	54	577
14 04	2 Bed	79	849
14 05	1 Bed	52	561
14 06	1 Bed	52	564
14 07	Suite	43	462
14 08	1 Bed	59	638
14 09	Suite	40	434
14 10	2 bed	100	1073
14 11	Suite	39	421
14 12	2 bed	90	973
14 13	2 Bed	107	1148
14 14	Suite	40	433

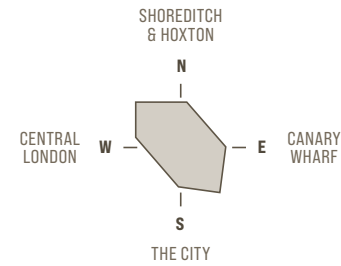


No.	Type	SQ.M.	SQ.FT
15 01	1 Bed	63	682
15 02	Suite	47	504
15 03	1 Bed	54	582
15 04	2 Bed	79	849
15 05	1 Bed	52	561
15 06	1 Bed	52	564
15 07	Suite	43	462
15 08	1 Bed	59	638
15 09	Suite	40	434
15 10	2 bed	100	1073
15 11	Suite	39	421
15 12	2 bed	90	973
15 13	2 Bed	107	1148
15 14	Suite	40	433

- Suite
- 1 bedroom
- 2 bedroom

Apartment layouts are intended to be correct, precise details may vary, furniture shown for illustrative purposes only. Total areas are accurate to within 5%.

16-17



No.	Type	SQ.M.	SQ.FT
16 01	1 Bed	63	682
16 02	Suite	47	504
16 03	1 Bed	54	582
16 04	2 Bed	79	849
16 05	1 Bed	52	561
16 06	1 Bed	52	564
16 07	Suite	44	468
16 08	1 Bed	59	638
16 09	Suite	40	434
16 10	2 bed	100	1073
16 11	Suite	39	421
16 12	2 bed	90	973
16 13	2 Bed	107	1148
16 14	Suite	40	433



No.	Type	SQ.M.	SQ.FT
17 01	1 Bed	63	682
17 02	Suite	47	504
17 03	1 Bed	54	582
17 04	2 Bed	79	849
17 05	1 Bed	52	561
17 06	1 Bed	52	564
17 07	Suite	44	468
17 08	1 Bed	59	638
17 09	Suite	40	434
17 10	2 bed	100	1073
17 11	Suite	39	421
17 12	2 bed	90	973
17 13	2 Bed	107	1148
17 14	Suite	40	433

- Suite
- 1 bedroom
- 2 bedroom

Apartment layouts are intended to be correct, precise details may vary, furniture shown for illustrative purposes only. Total areas are accurate to within 5%.

Actual view from level 16 looking west.

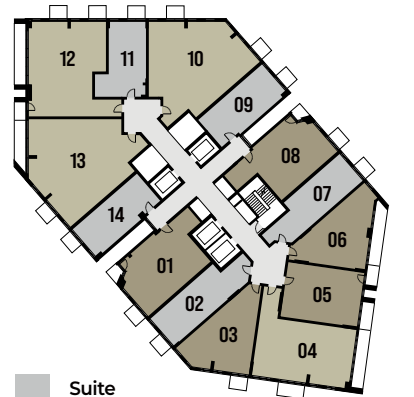


Actual view from level 16 looking east.

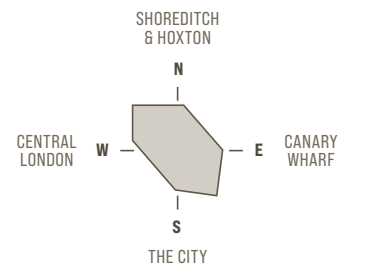


16-17

APARTMENT VIEWS

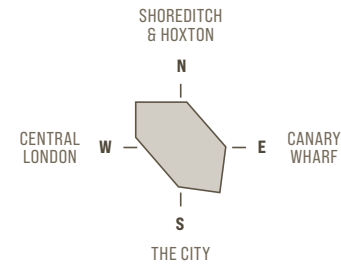


- Suite
- 1 bedroom
- 2 bedroom



Apartment levels 15-20 will enjoy similar views looking East and West, all directions and aspects at these levels encompass superb panoramic views.

18-19



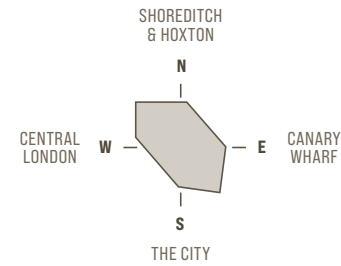
No.	Type	SQ.M.	SQ.FT
18 01	1 Bed	63	682
18 02	Suite	47	504
18 03	1 Bed	54	582
18 04	2 Bed	79	846
18 05	1 Bed	52	561
18 06	1 Bed	52	564
18 07	Suite	44	468
18 08	1 Bed	59	638
18 09	Suite	40	434
18 10	2 bed	100	1073
18 11	Suite	39	421
18 12	2 bed	90	973
18 13	2 Bed	107	1148
18 14	Suite	40	433



No.	Type	SQ.M.	SQ.FT
19 01	1 Bed	62	671
19 02	Suite	46	495
19 03	1 Bed	54	582
19 04	2 Bed	79	849
19 05	1 Bed	52	561
19 06	3 Bed	160	1720
19 07	Suite	40	434
19 08	2 Bed	100	1073
19 09	Suite	39	421
19 10	2 bed	90	973
19 11	2 bed	107	1148
19 12	Suite	40	433

Apartment layouts are intended to be correct, precise details may vary, furniture shown for illustrative purposes only. Total areas are accurate to within 5%.

20-21



No.	Type	SQ.M.	SQ.FT
20 01	1 Bed	61	654
20 02	Suite	47	504
20 03	1 Bed	54	582
20 04	2 Bed	79	849
20 05	1 Bed	52	561
20 06	3 Bed	159	1707
20 07	Suite	40	434
20 08	2 Bed	100	1073
20 09	Suite	39	421
20 10	2 bed	90	973
20 11	2 bed	107	1148
20 12	Suite	40	433

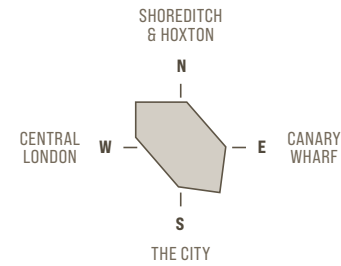


No.	Type	SQ.M.	SQ.FT
21 01	1 Bed	59	638
21 02	Suite	47	504
21 03	1 Bed	54	582
21 04	2 Bed	79	849
21 05	1 Bed	52	561
21 06	3 Bed	157	1687
21 07	Suite	40	434
21 08	2 Bed	100	1073
21 09	Suite	39	421
21 10	2 bed	90	973
21 11	2 bed	107	1148
21 12	Suite	40	433

- Suite
- 1 bedroom
- 2 bedroom
- 3 bedroom

Apartment layouts are intended to be correct, precise details may vary, furniture shown for illustrative purposes only. Total areas are accurate to within 5%.

22-23



No.	Type	SQ.M.	SQ.FT
22 01	1 Bed	58	621
22 02	Suite	47	504
22 03	1 Bed	54	582
22 04	2 Bed	79	848
22 05	1 Bed	52	561
22 06	3 Bed	155	1673
22 07	Suite	40	434
22 08	2 Bed	100	1073
22 09	Suite	39	421
22 10	2 bed	90	973
22 11	2 bed	107	1148
22 12	Suite	40	433

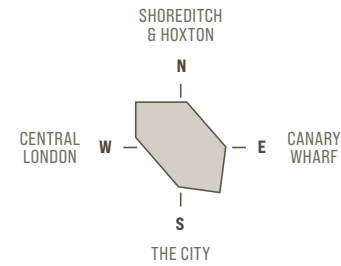


No.	Type	SQ.M.	SQ.FT
23 01	1 Bed	56	604
23 02	Suite	47	504
23 03	1 Bed	54	582
23 04	2 Bed	79	849
23 05	1 Bed	52	561
23 06	3 Bed	154	1653
23 07	Suite	40	434
23 08	2 Bed	100	1073
23 09	Suite	39	421
23 10	2 bed	90	973
23 11	2 bed	107	1148
23 12	Suite	40	433

- Suite
- 1 bedroom
- 2 bedroom
- 3 bedroom

Apartment layouts are intended to be correct, precise details may vary, furniture shown for illustrative purposes only. Total areas are accurate to within 5%.

24-25



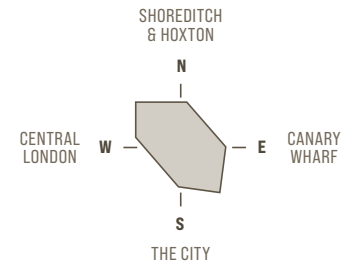
No.	Type	SQ.M.	SQ.FT
24 01	1 Bed	54	580
24 02	Suite	47	504
24 03	1 Bed	54	581
24 04	2 Bed	79	849
24 05	1 Bed	52	561
24 06	3 Bed	151	1627
24 07	Suite	40	434
24 08	2 Bed	100	1073
24 09	Suite	39	421
24 10	2 bed	90	973
24 11	2 bed	107	1148
24 12	Suite	40	433



No.	Type	SQ.M.	SQ.FT
25 01	1 Bed	52	555
25 02	Suite	47	504
25 03	1 Bed	54	582
25 04	2 Bed	79	849
25 05	1 Bed	52	561
25 06	3 Bed	149	1605
25 07	Suite	40	434
25 08	2 Bed	100	1073
25 09	Suite	39	421
25 10	2 bed	90	973
25 11	2 bed	107	1148
25 12	Suite	40	433

Apartment layouts are intended to be correct, precise details may vary, furniture shown for illustrative purposes only. Total areas are accurate to within 5%.

26-27



No.	Type	SQ.M.	SQ.FT
26 01	3 Bed	156	1677
26 02	3 Bed	135	1448
26 03	3 Bed	147	1579
26 04	Suite	40	434
26 05	2 Bed	100	1073
26 06	1 Bed	53	570
26 07	1 Bed	77	830
26 08	2 Bed	107	1148
26 09	Suite	40	433

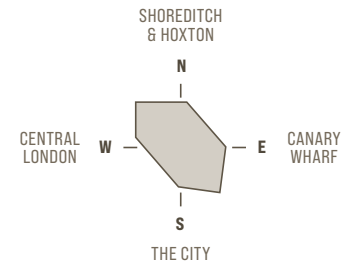


No.	Type	SQ.M.	SQ.FT
27 01	3 Bed	154	1654
27 02	3 Bed	135	1448
27 03	3 Bed	144	1552
27 04	Suite	40	434
27 05	2 Bed	100	1073
27 06	1 Bed	53	570
27 07	1 Bed	77	830
27 08	2 Bed	107	1149
27 09	Suite	40	433

- Suite
- 1 bedroom
- 2 bedroom
- 3 bedroom

Apartment layouts are intended to be correct, precise details may vary, furniture shown for illustrative purposes only. Total areas are accurate to within 5%.

28-29



No.	Type	SQ.M.	SQ.FT
28 01	3 Bed	152	1633
28 02	3 Bed	135	1448
28 03	3 Bed	143	1535
28 04	Suite	40	434
28 05	2 Bed	100	1073
28 06	1 Bed	53	570
28 07	1 Bed	77	830
28 08	2 Bed	107	1149
28 09	Suite	40	433



No.	Type	SQ.M.	SQ.FT
29 01	3 Bed	150	1612
29 02	3 Bed	135	1448
29 03	3 Bed	140	1510
29 04	Suite	41	437
29 05	2 Bed	100	1073
29 06	3 Bed	134	1439
29 07	2 Bed	107	1148
29 08	Suite	40	432

Apartment layouts are intended to be correct, precise details may vary, furniture shown for illustrative purposes only. Total areas are accurate to within 5%.



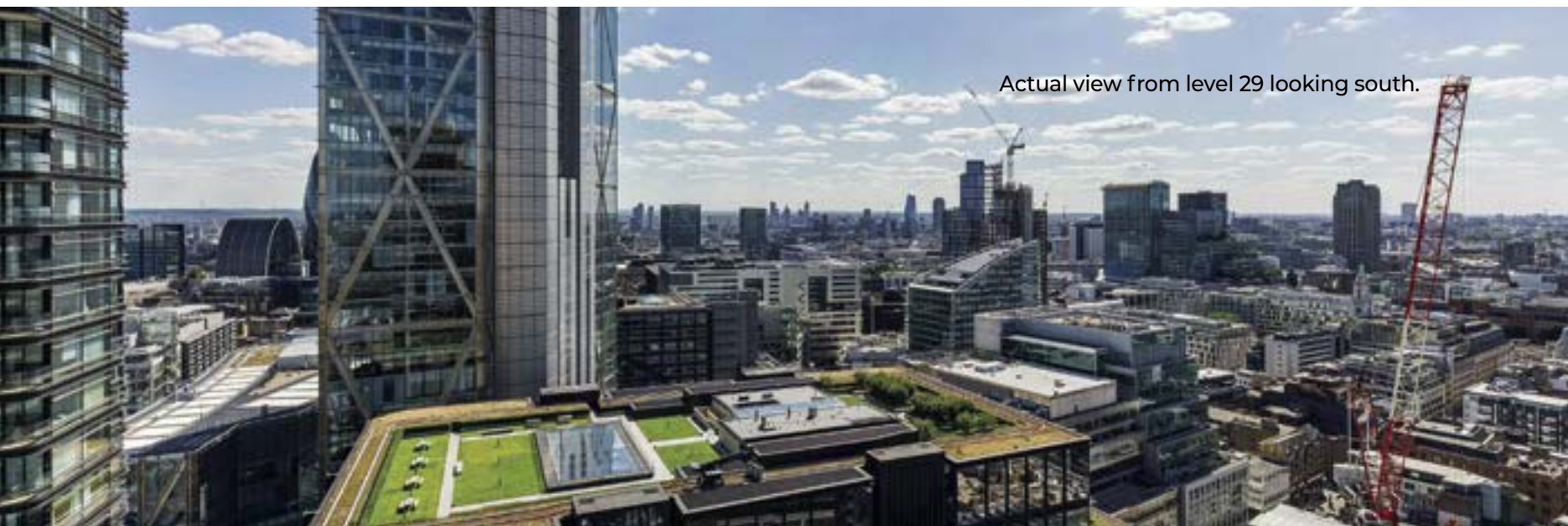
Actual view from level 29 looking west.



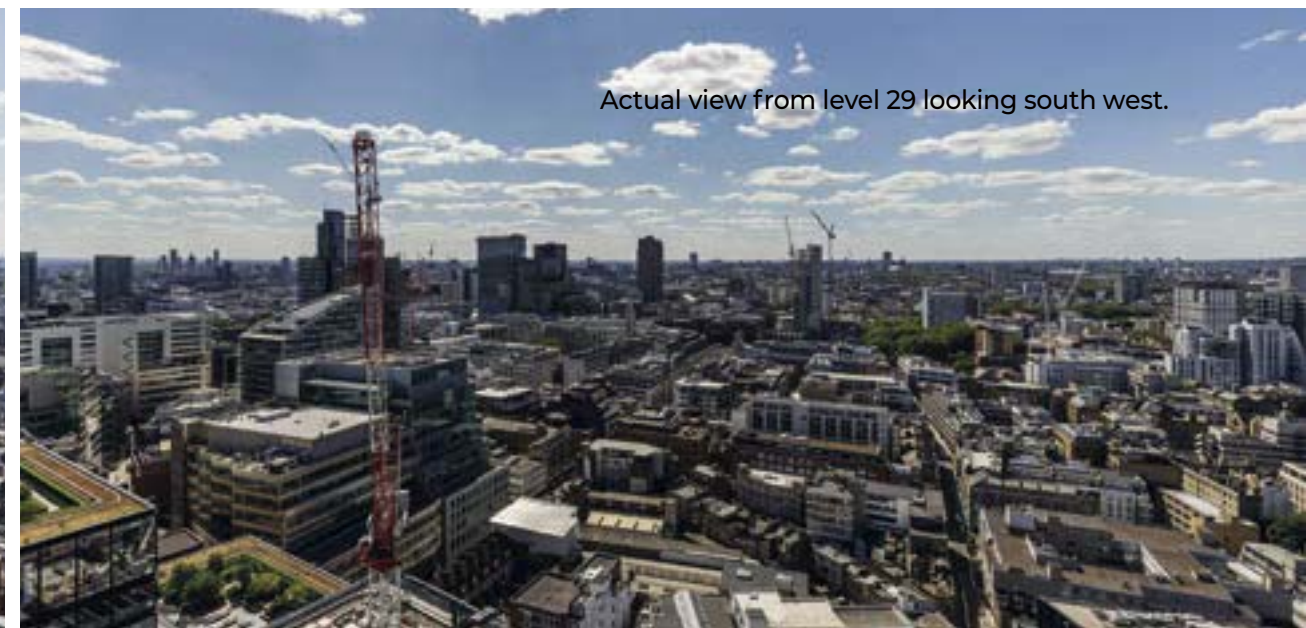
Actual view from level 29 looking north west.



Actual view from level 29 looking east.



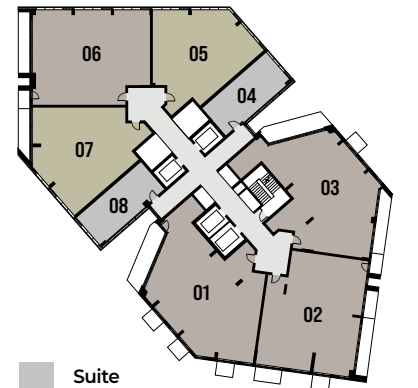
Actual view from level 29 looking south.



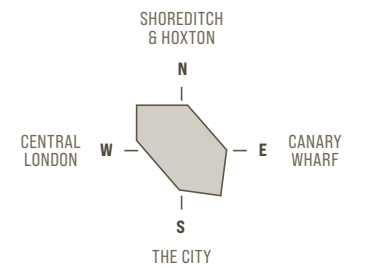
Actual view from level 29 looking south west.

28-29

APARTMENT VIEWS

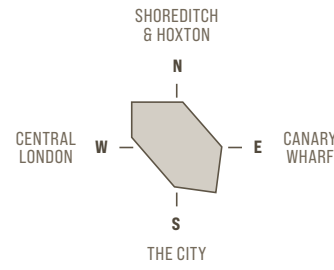


- Suite
- 2 bedroom
- 3 bedroom



These views from level 29 will be shared by all apartments from levels 25 to 30 - where residents' can take in the Capital's vast cityscape and ever changing aspects from sunrise to sunset.

30-31



No.	Type	SQ.M.	SQ.FT
30 01	3 Bed	148	1593
30 02	3 Bed	135	1448
30 03	3 Bed	139	1492
30 04	Suite	40	435
30 05	2 Bed	100	1073
30 06	3 Bed	134	1439
30 07	2 Bed	107	1148
30 08	Suite	40	434

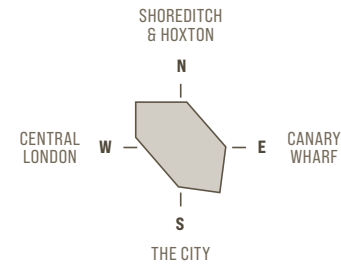


No.	Type	SQ.M.	SQ.FT
31 01	3 Bed	146	1569
31 02	3 Bed	135	1448
31 03	3 Bed	137	1470
31 04	Suite	40	435
31 05	2 Bed	100	1073
31 06	3 Bed	134	1439
31 07	2 Bed	107	1148
31 08	Suite	40	431

- Suite
- 1 bedroom
- 2 bedroom
- 3 bedroom

Apartment layouts are intended to be correct, precise details may vary, furniture shown for illustrative purposes only. Total areas are accurate to within 5%.

32-33



No.	Type	SQ.M.	SQ.FT
32 01	3 Bed	139	1499
32 02	3 Bed	135	1448
32 03	3 Bed	131	1410

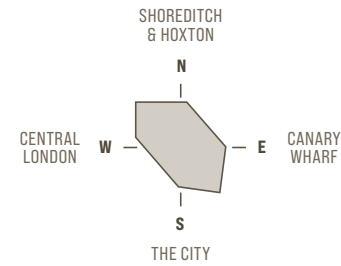
Apartment layouts are intended to be correct, precise details may vary, furniture shown for illustrative purposes only. Total areas are accurate to within 5%.



2 bedroom
3 bedroom

No.	Type	SQ.M.	SQ.FT
33 01	2 Bed	136	1473
33 02	3 Bed	135	1448
33 03	3 Bed	129	1384

34-35



2 bedroom
3 bedroom



No.	Type	SQ.M.	SQ.FT
34 01	2 Bed	127	1365
34 02	3 Bed	135	1448
34 03	2 Bed	118	1266



No.	Type	SQ.M.	SQ.FT
35 01	2 Bed	126	1354
35 02	3 Bed	135	1448
35 03	2 Bed	116	1250

Apartment layouts are intended to be correct, precise details may vary, furniture shown for illustrative purposes only. Total areas are accurate to within 5%.

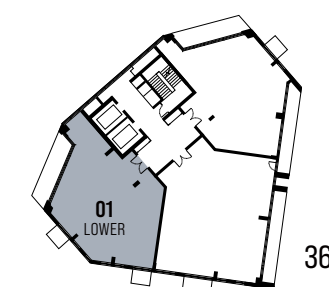
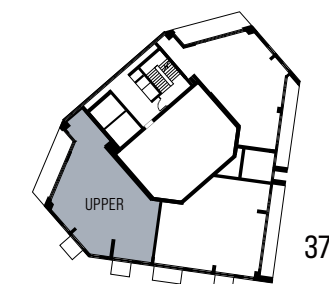
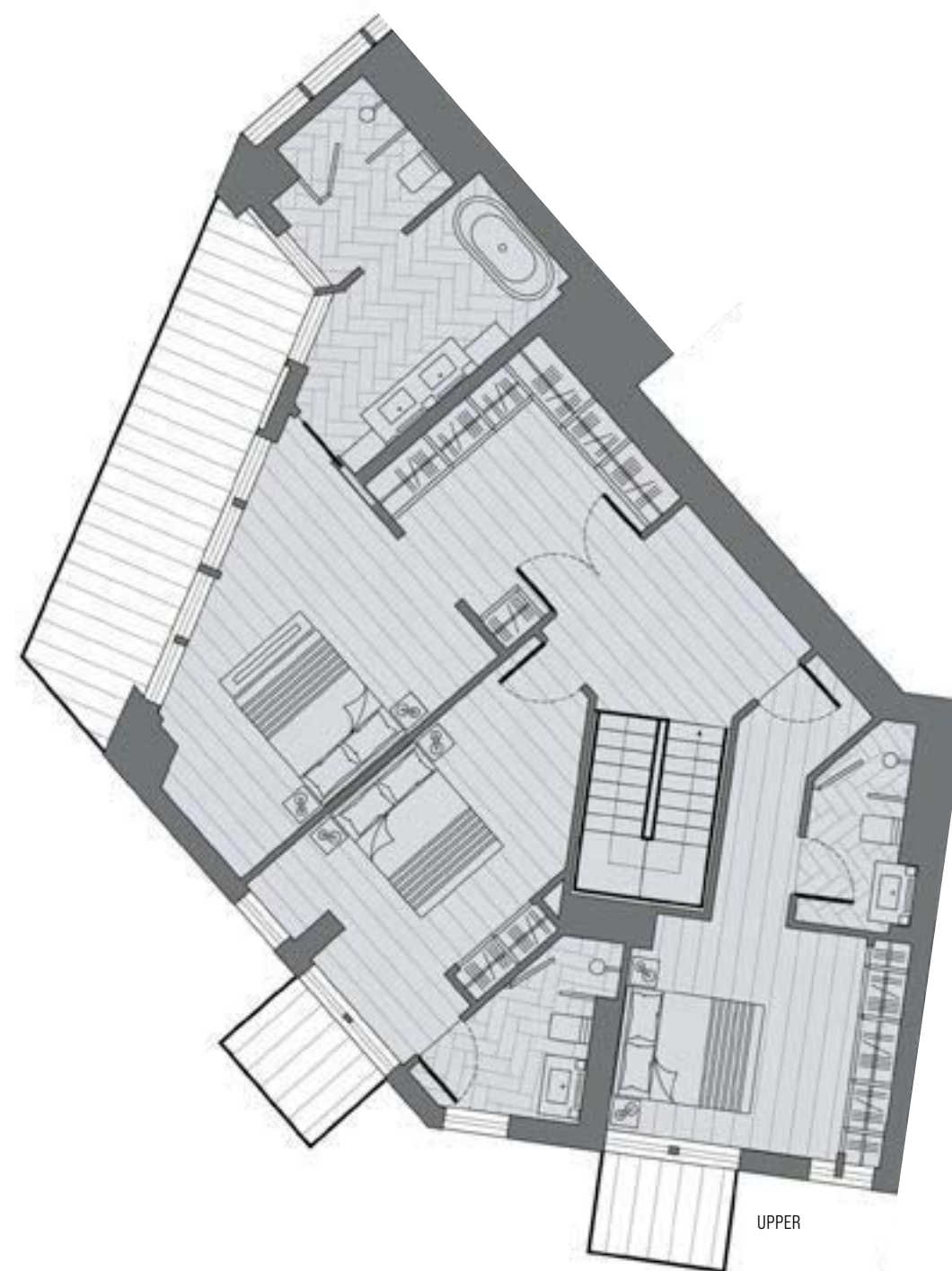
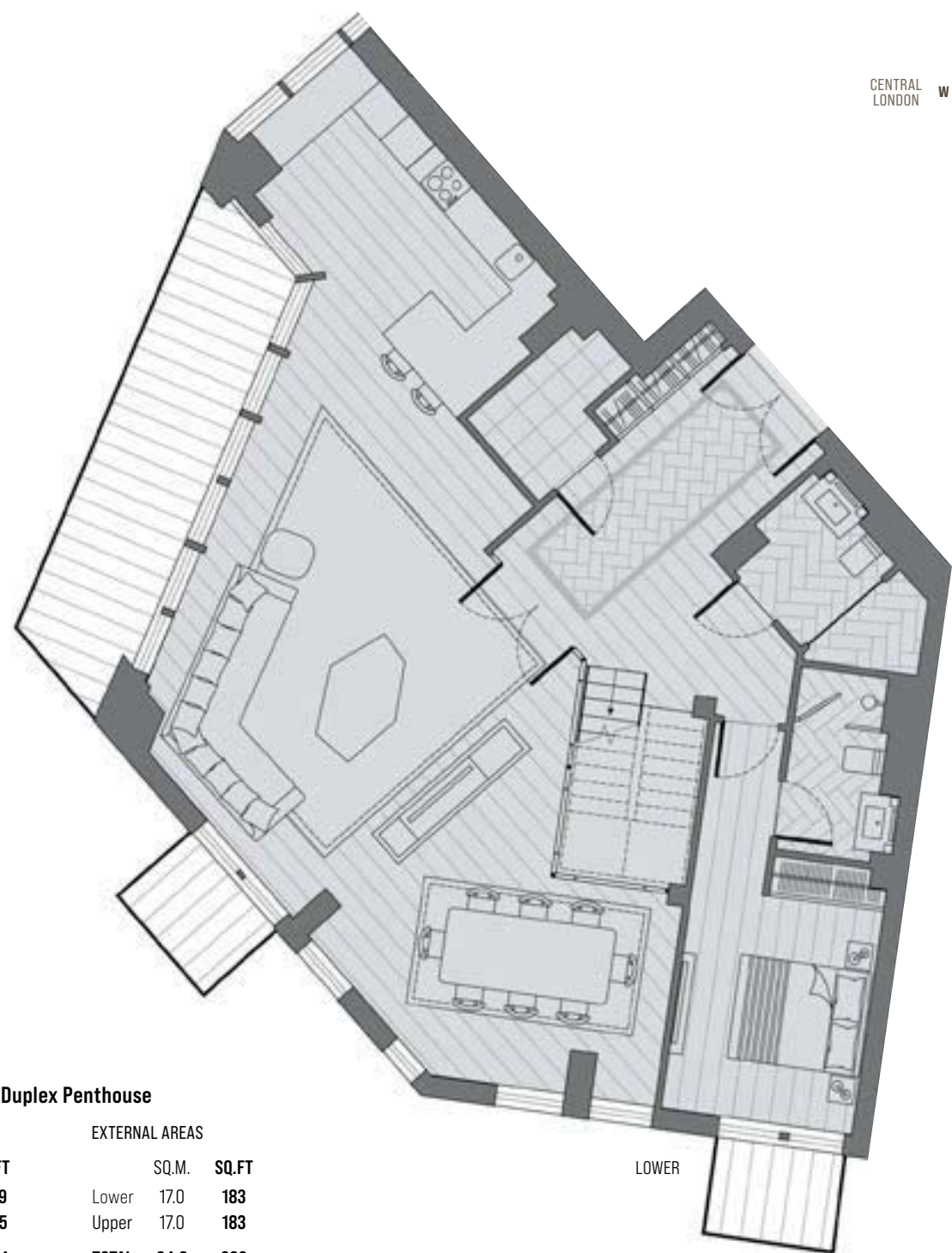
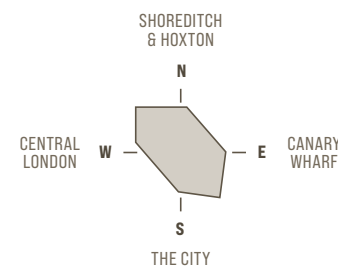
**T H E
S T A
G E .
E C 2**
SHOREDITCH

PENTHOUSE LEVELS 36-37



36-37

4 BED PENTHOUSE 3601



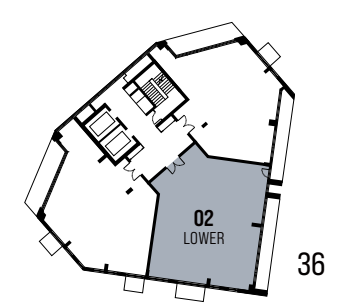
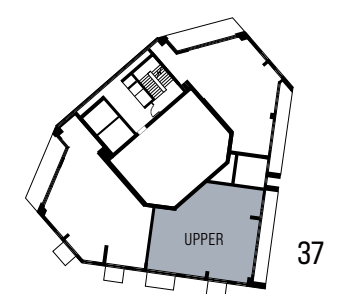
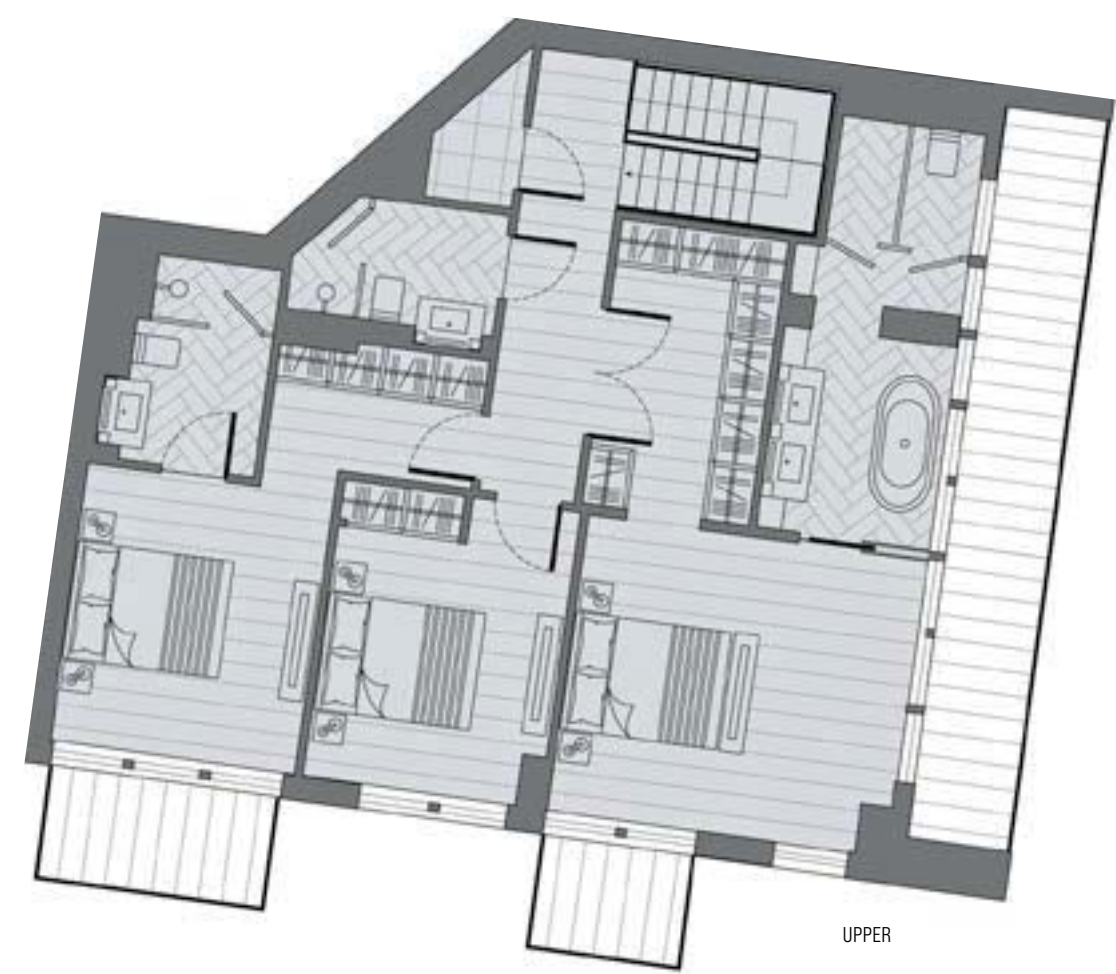
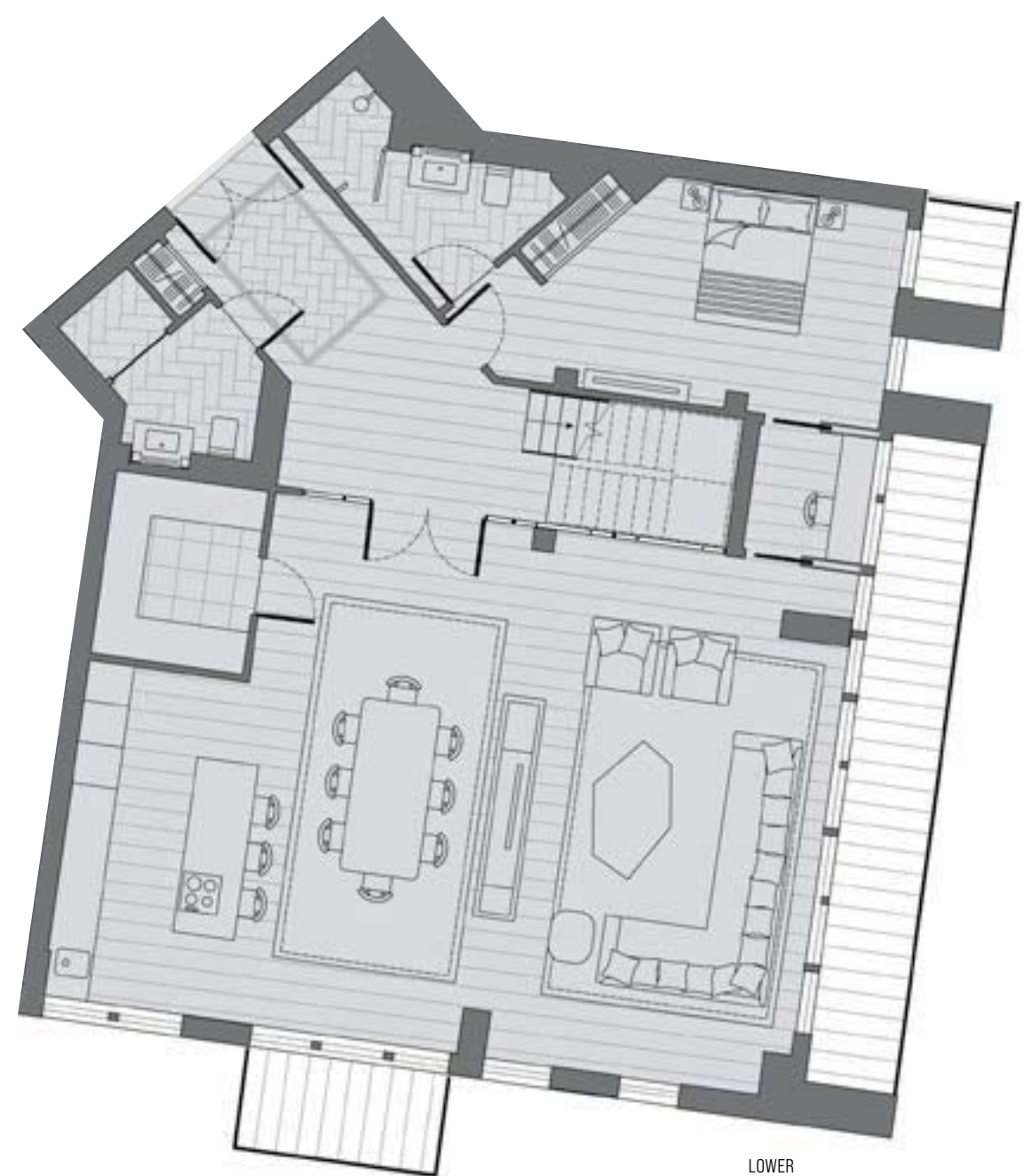
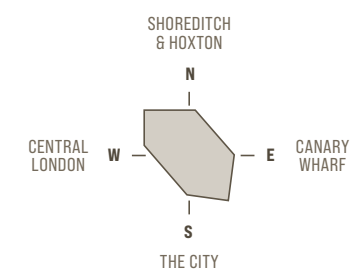
3601 4 Bedroom Duplex Penthouse

	INTERNAL AREAS		EXTERNAL AREAS	
	SQ.M.	SQ.FT	SQ.M.	SQ.FT
Lower	119.8	1289	17.0	183
Upper	101.7	1095	17.0	183
TOTAL	221.5	2384	TOTAL 34.0	366

Apartment layouts are intended to be correct, precise details may vary, furniture shown for illustrative purposes only. Total areas are accurate to within 5%.

36-37

4 BED PENTHOUSE 3602



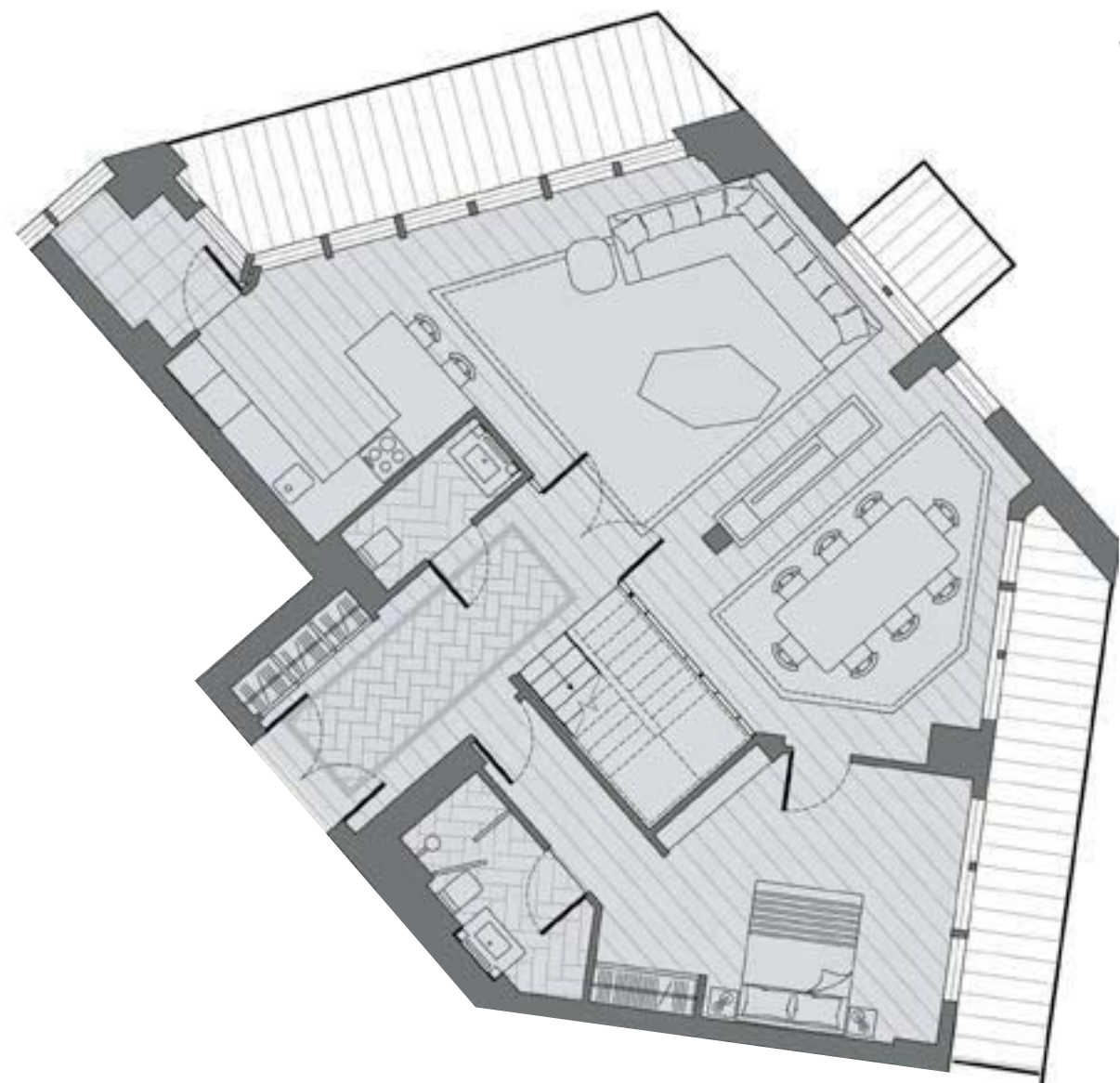
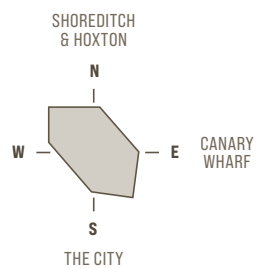
3602 4 Bedroom Dup

INTERNAL AREAS		EXTERNAL AREAS	
	SQ.M.	SQ.FT	
Lower	143.5	1544	Lower 18.4 198
Upper	96.7	1041	Upper 19.3 208
TOTAL	240.2	2585	TOTAL 37.7 406

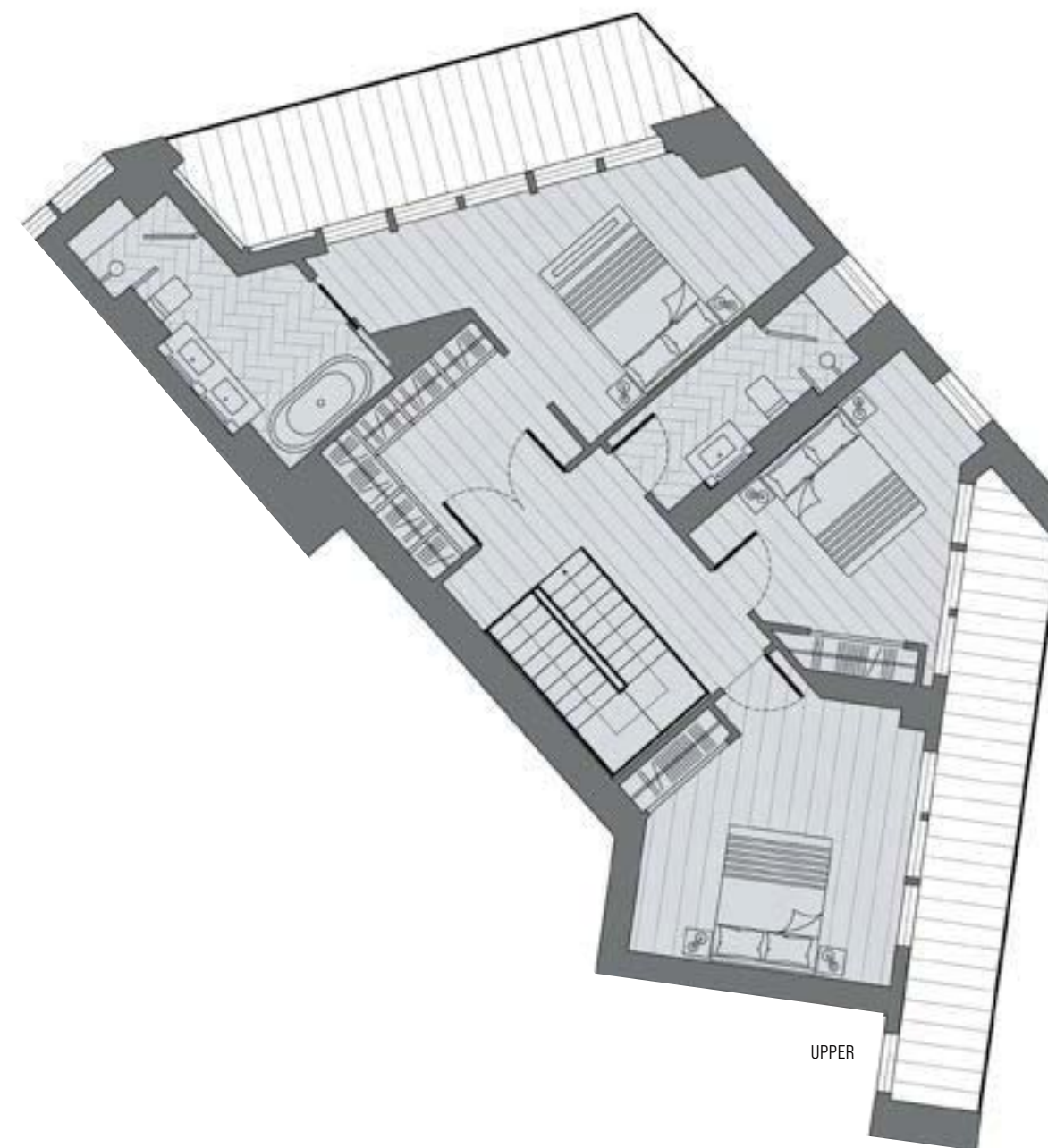
Apartment layouts are intended to be correct, precise details may vary, furniture shown for illustrative purposes only. Total areas are accurate to within 5%.

36-37

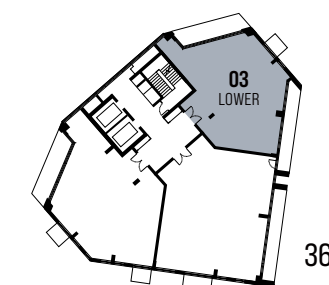
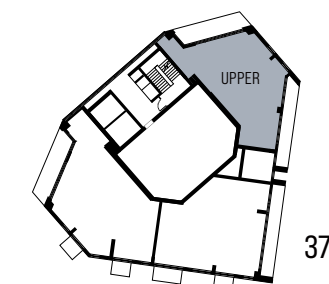
4 BED PENTHOUSE 3602



LOWER



UPPER



3603 4 Bedroom Duplex Penthouse

	INTERNAL AREAS		EXTERNAL AREAS	
	SQ.M.	SQ.FT	SQ.M.	SQ.FT
Lower	111.2	1197	21.0	226
Upper	85.6	921	24.0	258
TOTAL	196.8	2118	45.0	484

Apartment layouts are intended to be correct, precise details may vary, furniture shown for illustrative purposes only. Total areas are accurate to within 5%.

Actual view from level 36 looking west.

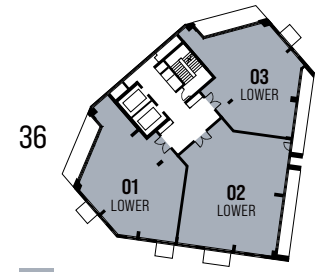
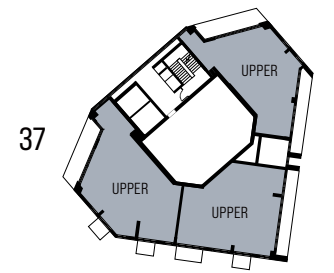


Actual view from level 36 looking east.

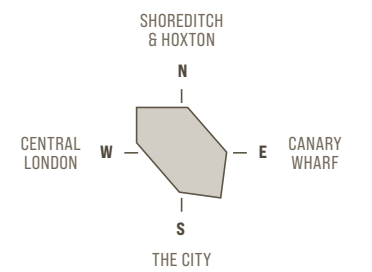


36-37


APARTMENT VIEWS



4 bedroom penthouse



With dual aspect balconies and terraces on both lower and upper duplex levels, each of the three magnificent penthouses will have the dramatic backdrop of the Capital's shimmering skyline to be enjoyed from each principal room or outside space.



The Stage is being developed by a UK and International group of companies with world leading resources and global expertise.

Image: View from The Stage penthouse level 36.



The largest privately owned residential developer in London with some 7000 homes currently under construction.



A global real estate investor with a property and development portfolio in excess of 3.2 billion and over 8000 homes across the UK, US and Europe.



McCourt Global is based in New York with offices in Los Angeles, London and Beijing. The company specialises in the investment and development of iconic schemes across the world.



The group is listed on both Fortune Global 500 and the Shenzhen Stock Exchange. It is also the largest real estate developer in China.



Based in the heart of Shoreditch itself, the company was responsible for the initial planning programme and early development process for The Stage.

THE
STAGE
EC2
SHOREDITCH

**T H E
S T A
G E .
E C 2**
S H O R E D I T C H

**THE STAGE
SALES & MARKETING SUITE**

SHOW APARTMENTS OPEN FOR VIEWING BY APPOINTMENT

20 Curtain Road, London EC2A 3NG

thestageshoreditch.com



These particulars are compiled with care to give a fair description but we cannot guarantee their accuracy and they do not constitute an offer or contract. Galliard Homes reserve the right to alter any specifications and floor plan layouts without prior notice. All journey times stated are approximate, source tfl.gov.uk. Walking times taken from google.com. Exterior images of The Stage are computer generated and deemed to be accurate at time of going to print. Potential purchasers should satisfy themselves as to the actual view any apartment will provide. The health and leisure facilities shown in this brochure may be subject to change by any operator or third party undertaking the management branding of the facility space. The Stage is a preferred marketing name only.

V2 April 2022

