



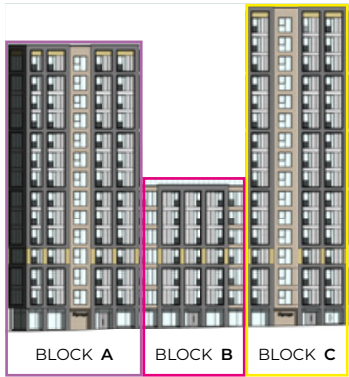
The Exchange

Preston

FLOOR PLANS MASTER



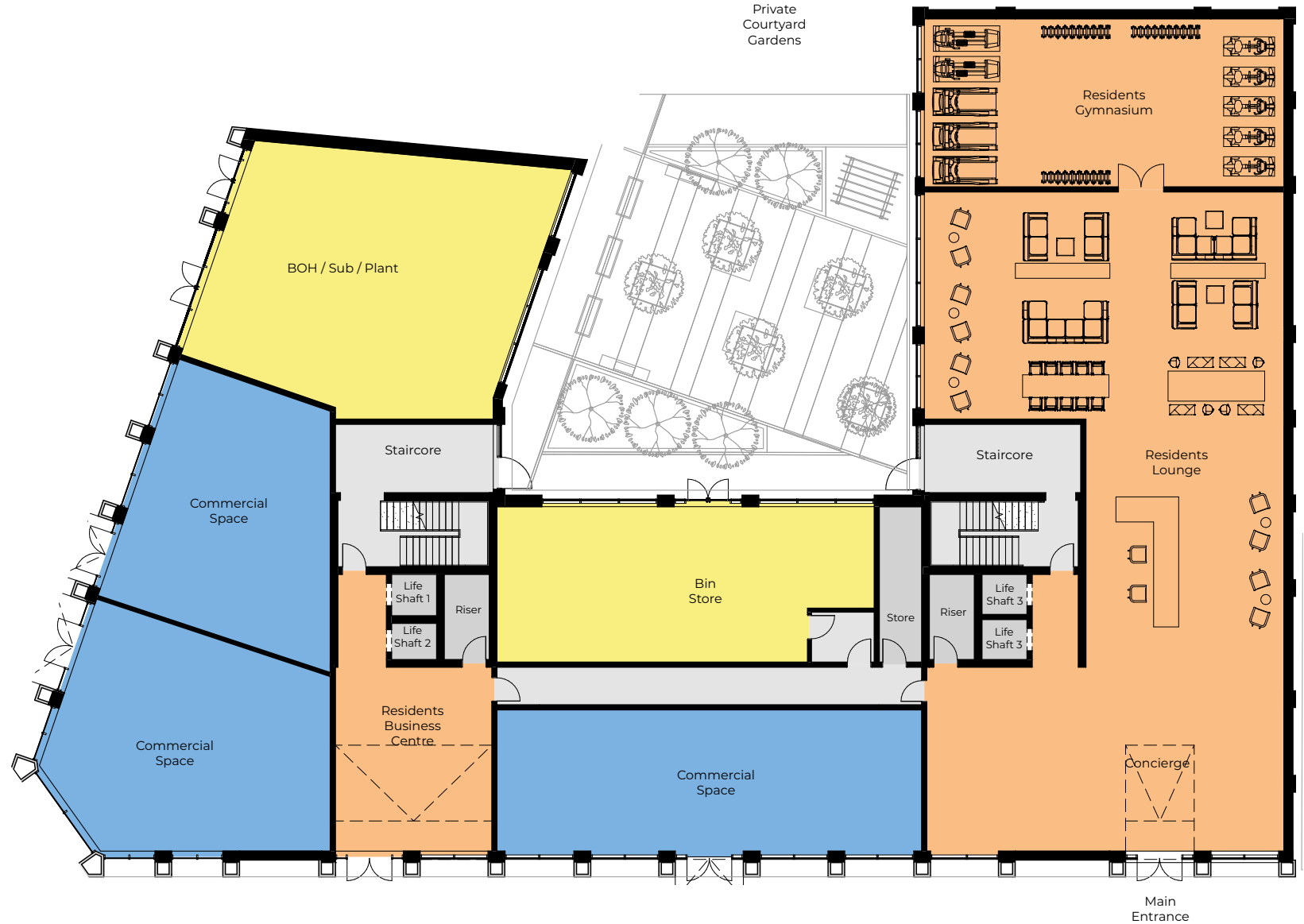
GROUND FLOOR



Please note: Elevation is indicative to show floor position relative to building.

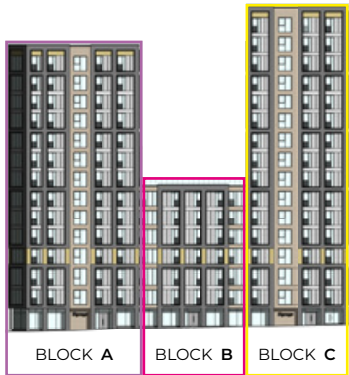
**Where possible measurements have been taken from the central point of the room.

**The listed dimensions are indicative and are for reference only. These dimensions do not relate to the overall apartment areas, i.e. angled floor plans and internal rooms.





FLOORS 1-6



Please note: Elevation is indicative to show floor position relative to building.

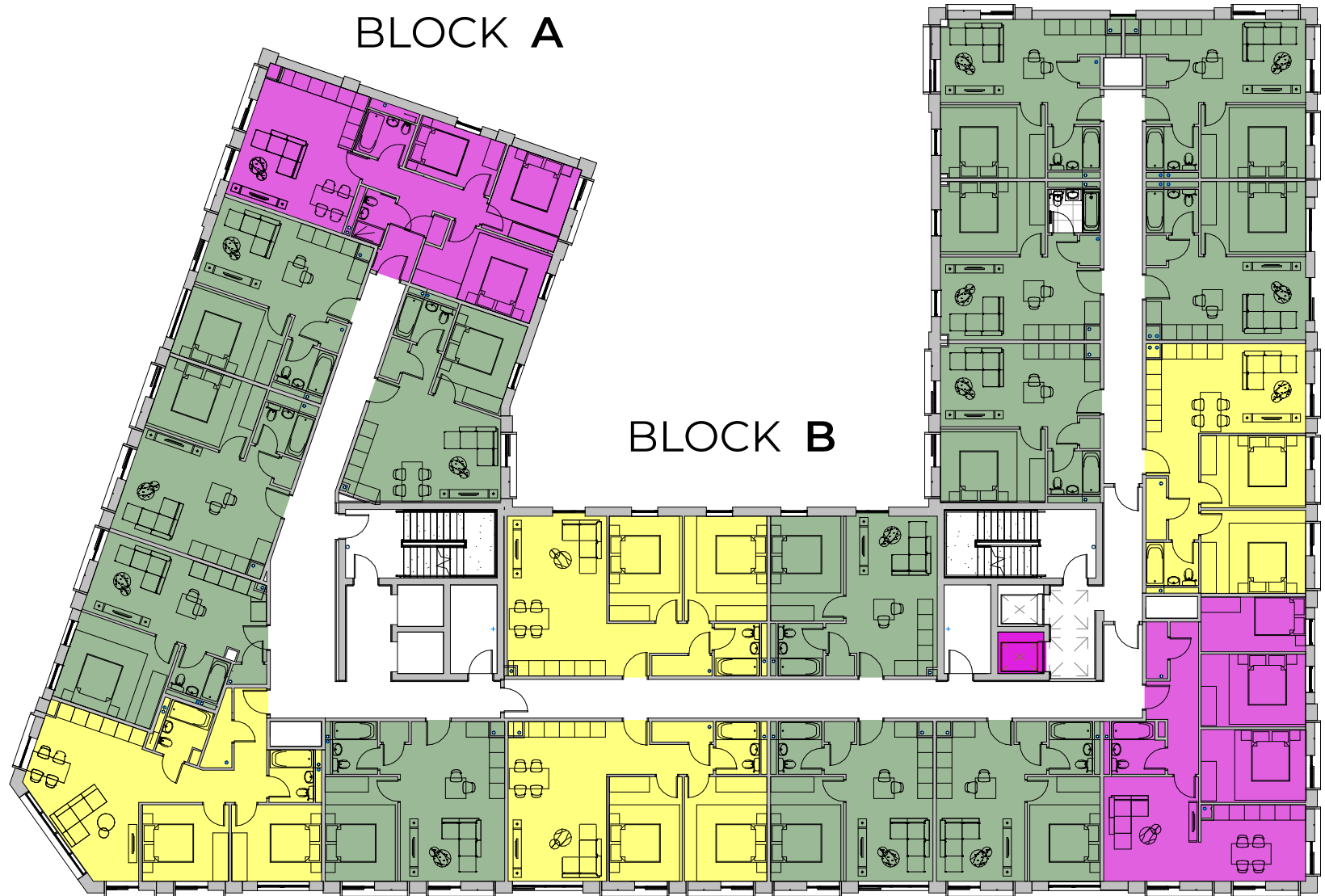
**Where possible measurements have been taken from the central point of the room.

**The listed dimensions are indicative and are for reference only. These dimensions do not relate to the overall apartment areas, i.e. angled floor plans and internal rooms.

BLOCK C

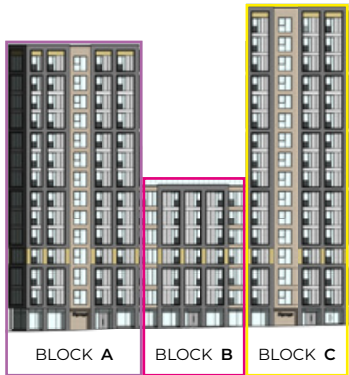
BLOCK A

BLOCK B





FLOOR 7

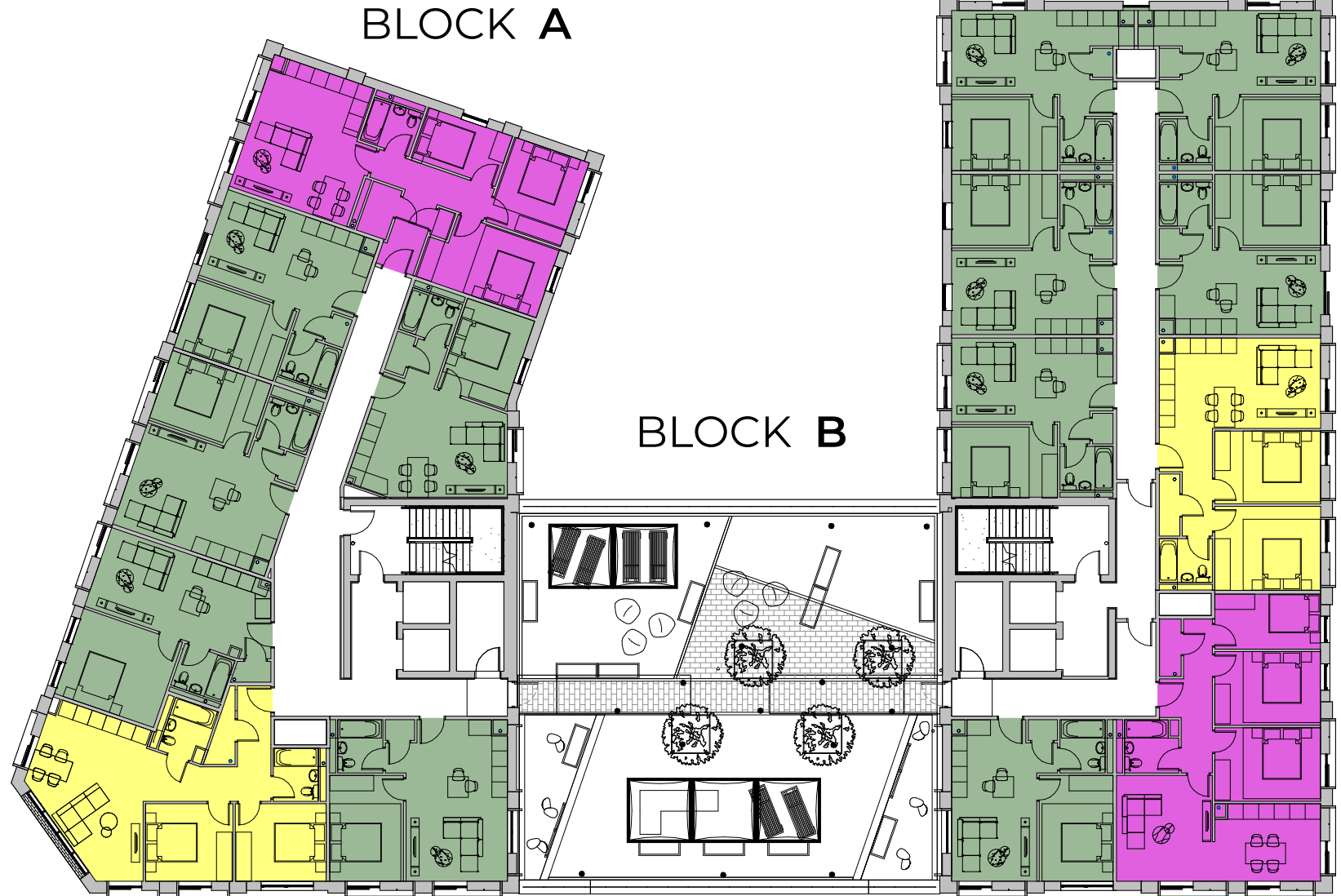


Please note: Elevation is indicative to show floor position relative to building.

**Where possible measurements have been taken from the central point of the room.

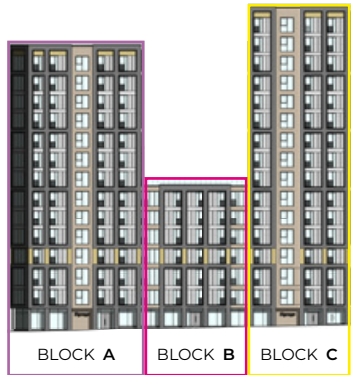
**The listed dimensions are indicative and are for reference only. These dimensions do not relate to the overall apartment areas, i.e. angled floor plans and internal rooms.

BLOCK C

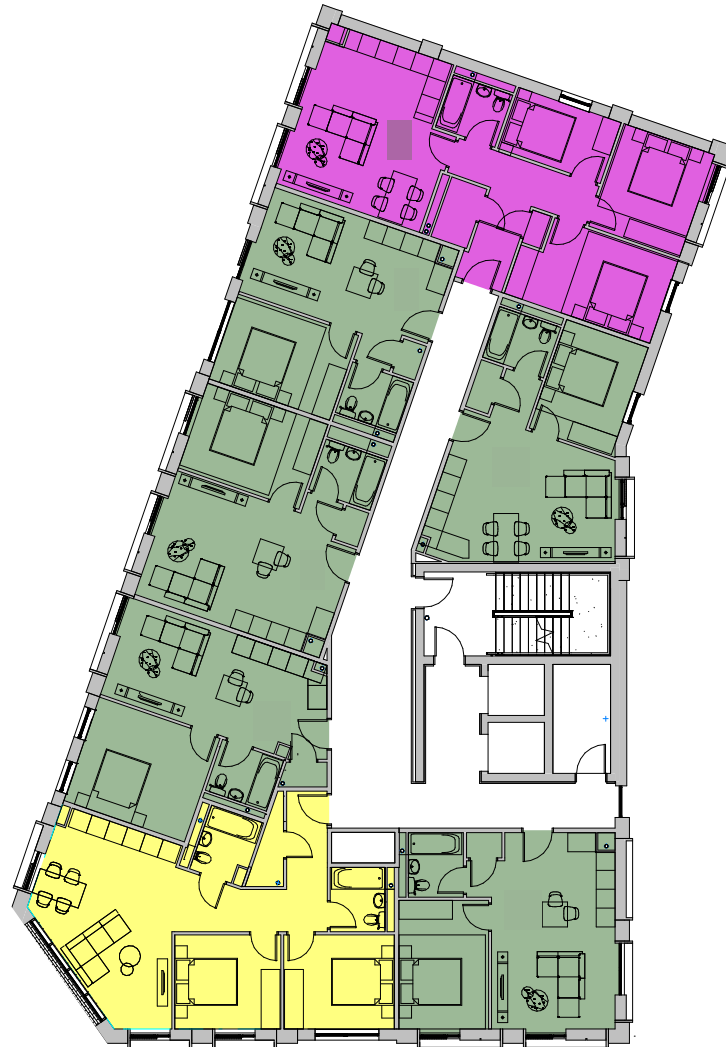




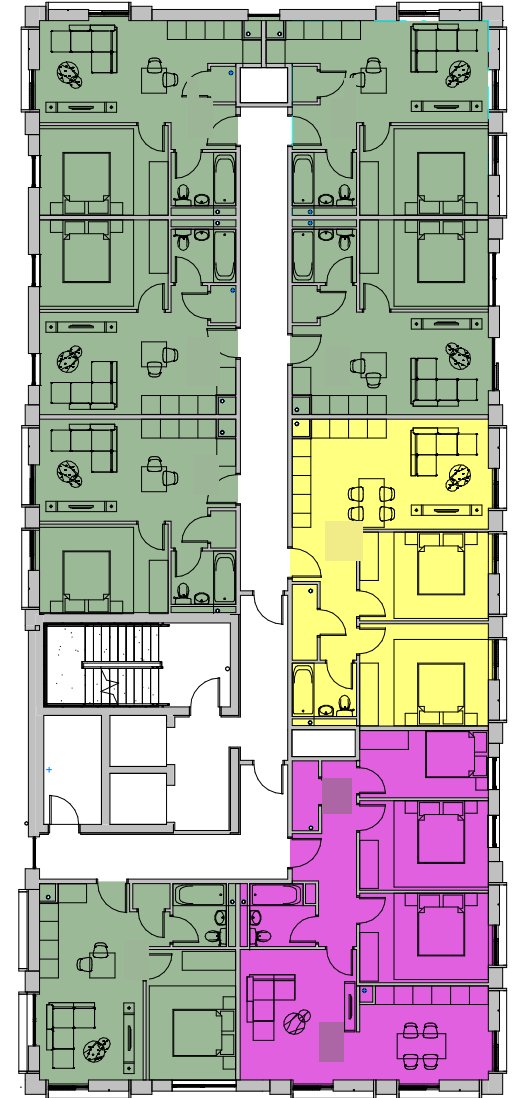
FLOOR 8



BLOCK A



BLOCK C



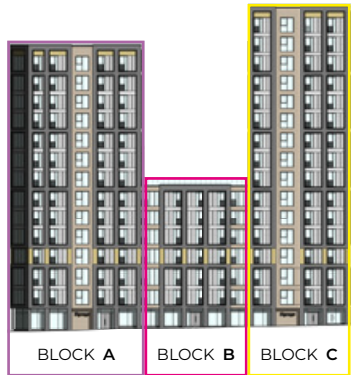
Please note: Elevation is indicative to show floor position relative to building.

**Where possible measurements have been taken from the central point of the room.

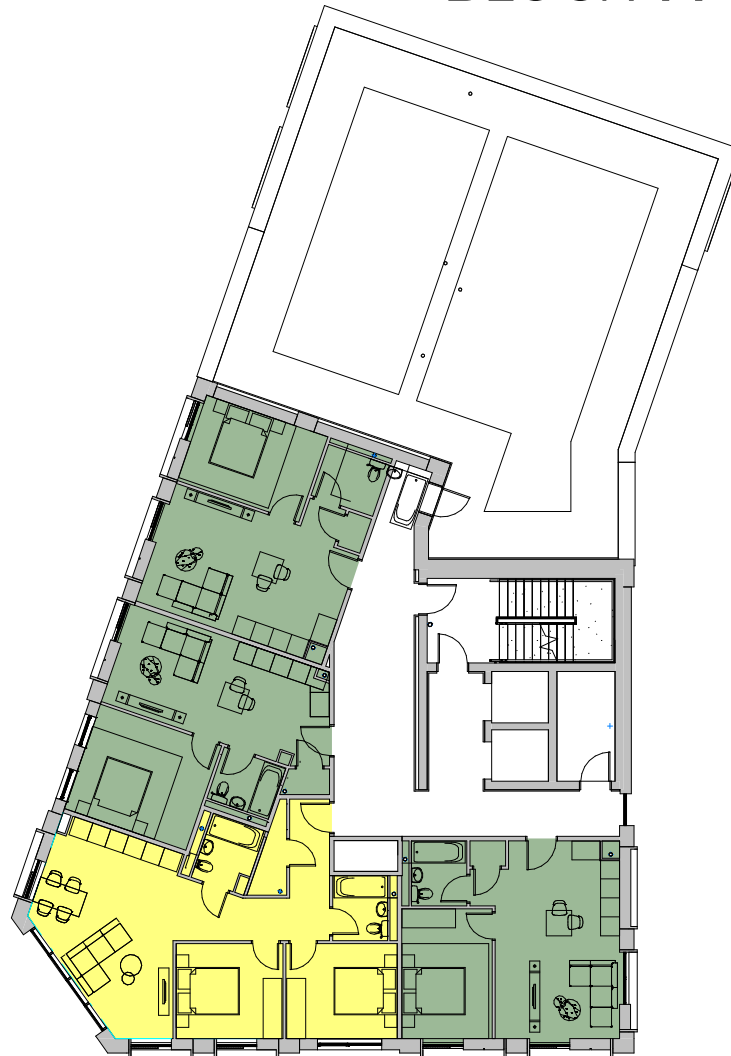
**The listed dimensions are indicative and are for reference only. These dimensions do not relate to the overall apartment areas, i.e. angled floor plans and internal rooms.



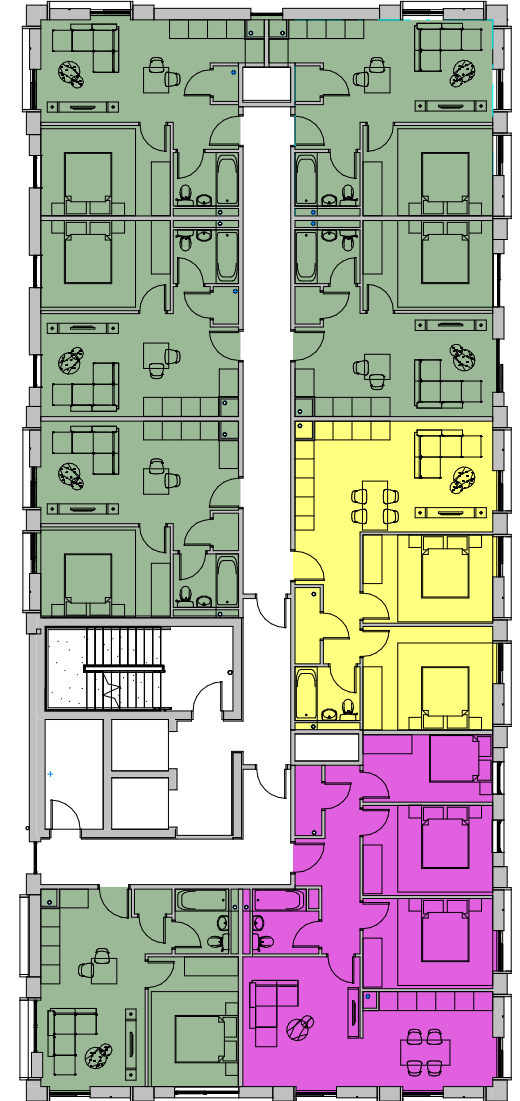
FLOOR 9



BLOCK A



BLOCK C



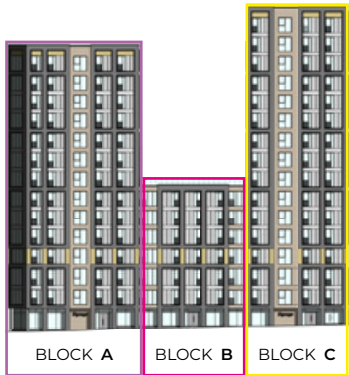
Please note: Elevation is indicative to show floor position relative to building.

**Where possible measurements have been taken from the central point of the room.

**The listed dimensions are indicative and are for reference only. These dimensions do not relate to the overall apartment areas, i.e. angled floor plans and internal rooms.



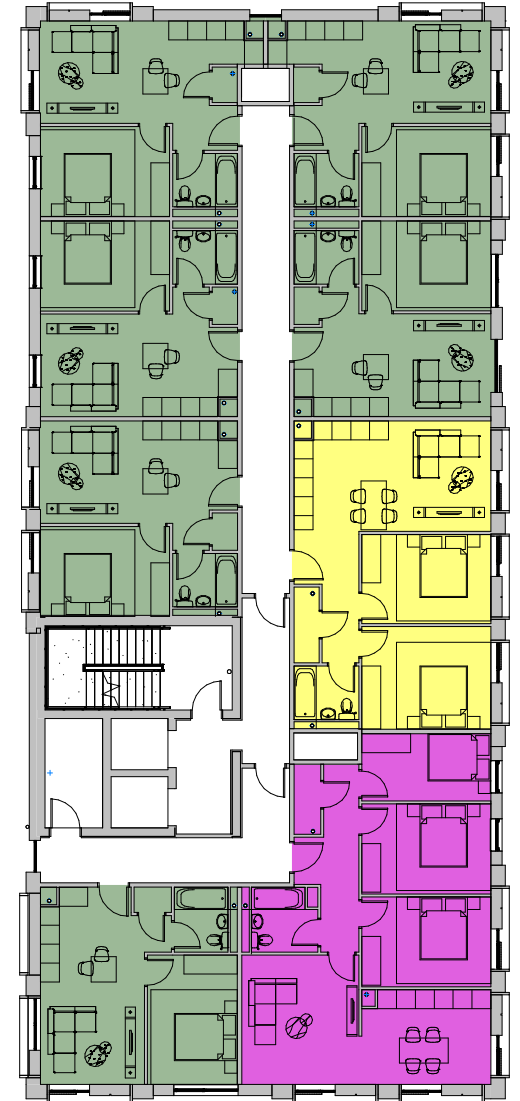
FLOOR 10



BLOCK A



BLOCK C



Please note: Elevation is indicative to show floor position relative to building.

**Where possible measurements have been taken from the central point of the room.

**The listed dimensions are indicative and are for reference only. These dimensions do not relate to the overall apartment areas, i.e. angled floor plans and internal rooms.