

THE  
AXIUM  
EXPERIENCE THE HEART OF THE CITY

FLOOR PLANS

THE AXIUM	4 - 5
FLOOR PLANS	6 - 15
APARTMENT PLANS	16 - 32
SALES AGENTS	33

EXPERIENCE  
THE HEART  
OF THE CITY

# INTRODUCING AN OUTSTANDING COLLECTION OF 304 LUXURIOUS APARTMENTS

POSITIONED IN THE VIBRANT LOCATION OF  
BIRMINGHAM CITY CENTRE.

**Experience the very best of urban living in a city rich in amenities and activities in a development that offers an exceptional lifestyle opportunity with corporate, shopping, dining and cultural hotspots just a heartbeat away.**

The Axiom development comprises a blend of 304 spacious one- and two-bedroom high-end apartments arranged across 10 floors, with each apartment enjoying the finest designs and highest specification interiors.

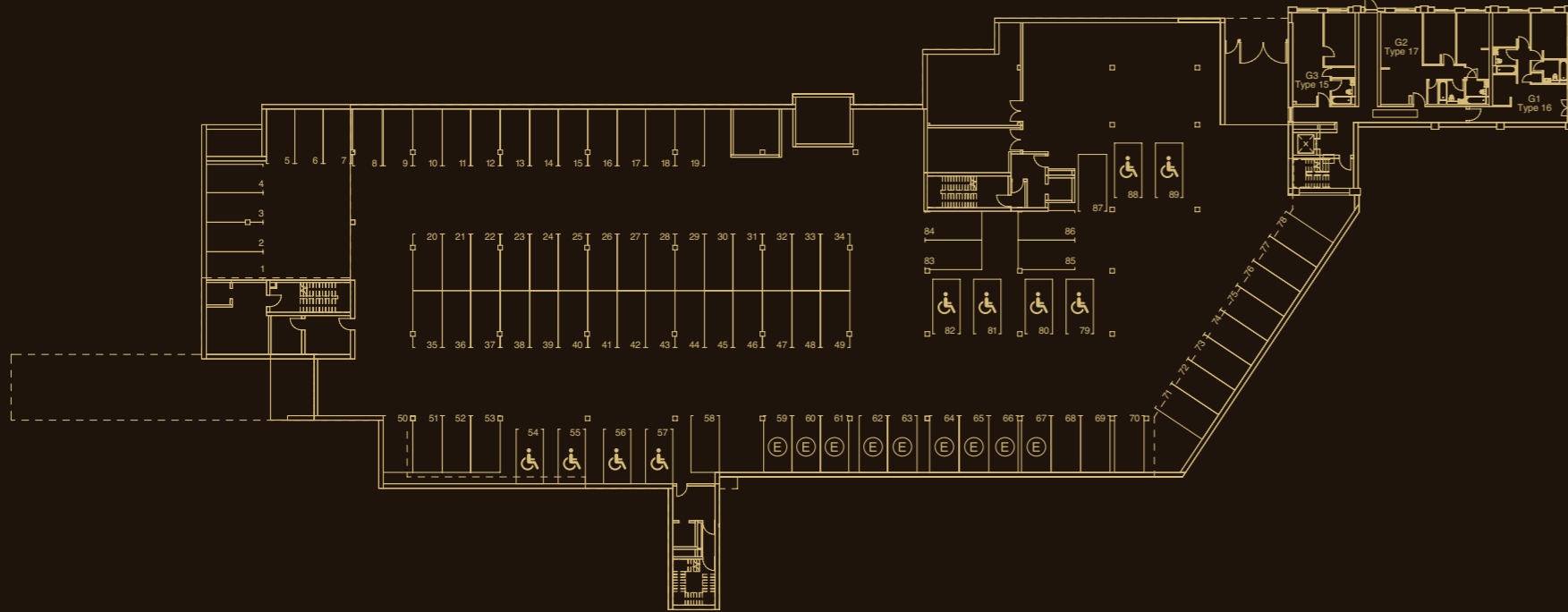
BEAUTIFULLY  
DESIGNED  
TO FIT ANY  
LIFESTYLE

| The Axiom at night

# GROUND FLOOR

## APARTMENTS AVAILABLE ON THIS FLOOR

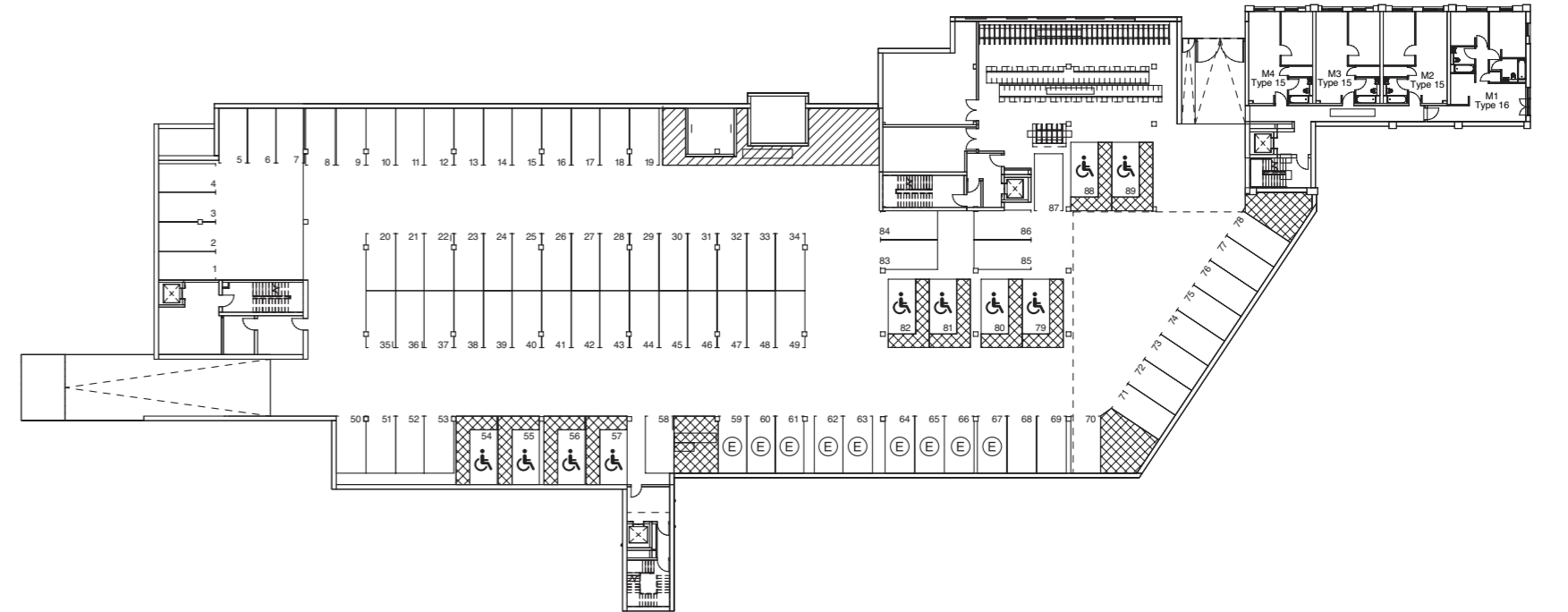
- 1 one bedroom apartments
- 2 two bedroom apartments



# MEZZANINE LEVEL

## APARTMENTS AVAILABLE ON THIS FLOOR

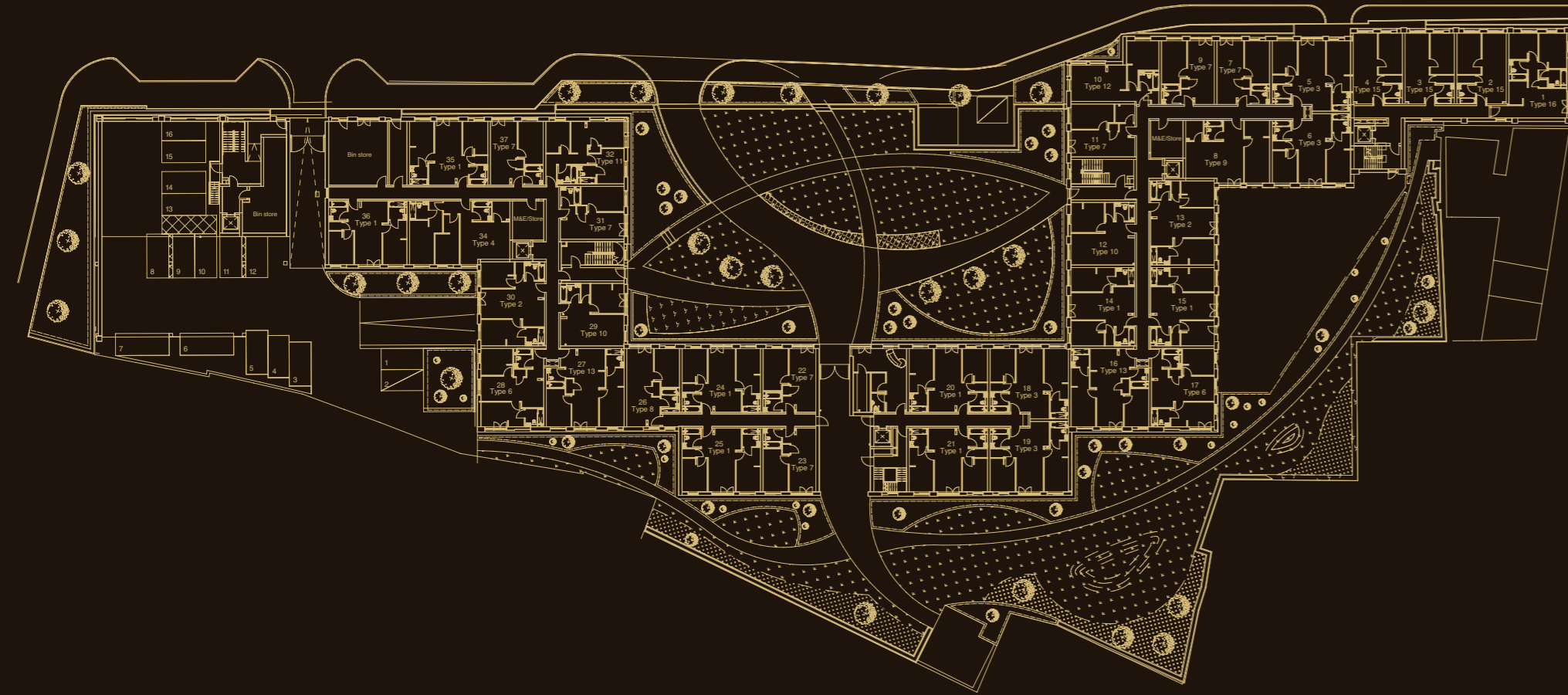
- 3 one bedroom apartments
- 1 two bedroom apartments



# GARDEN

## APARTMENTS AVAILABLE ON THIS FLOOR

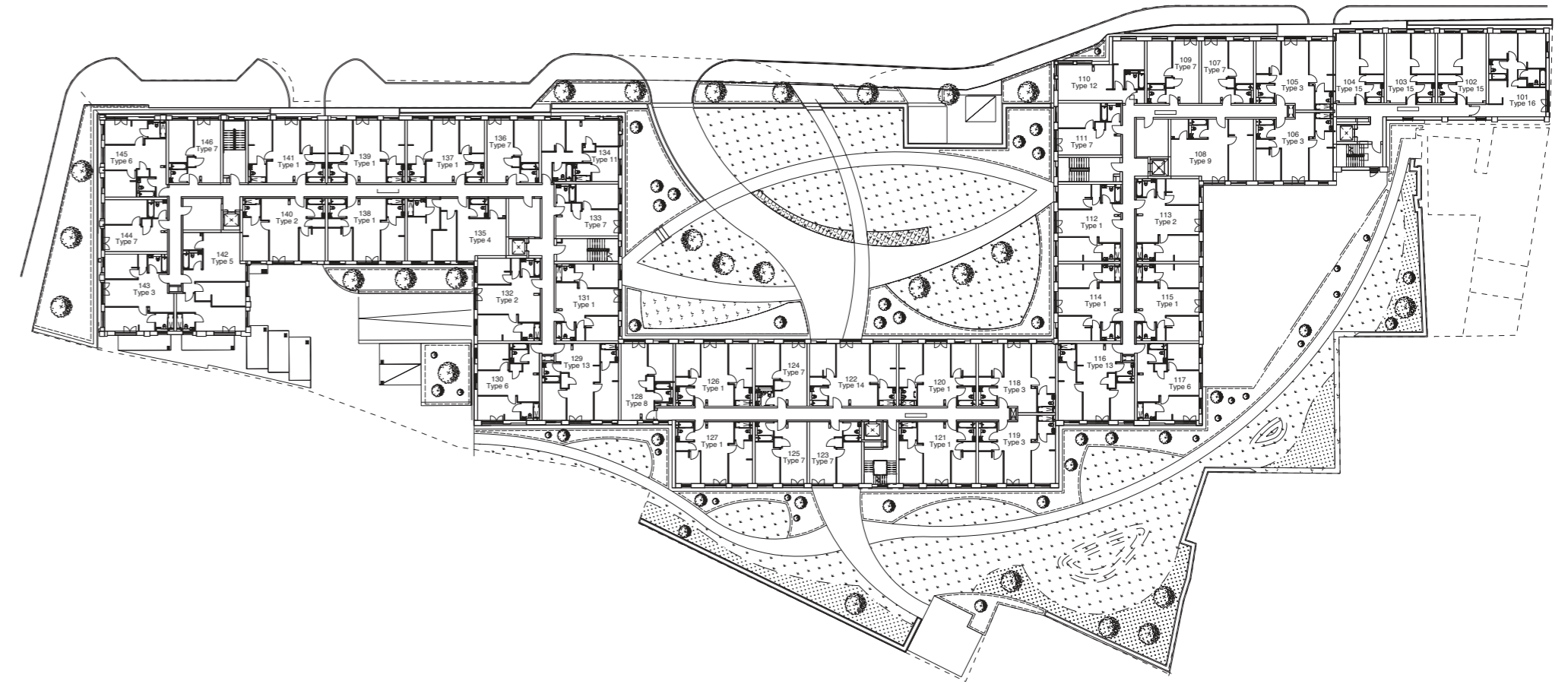
- 23 one bedroom apartments
- 13 two bedroom apartments



# FIRST FLOOR

## APARTMENTS AVAILABLE ON THIS FLOOR

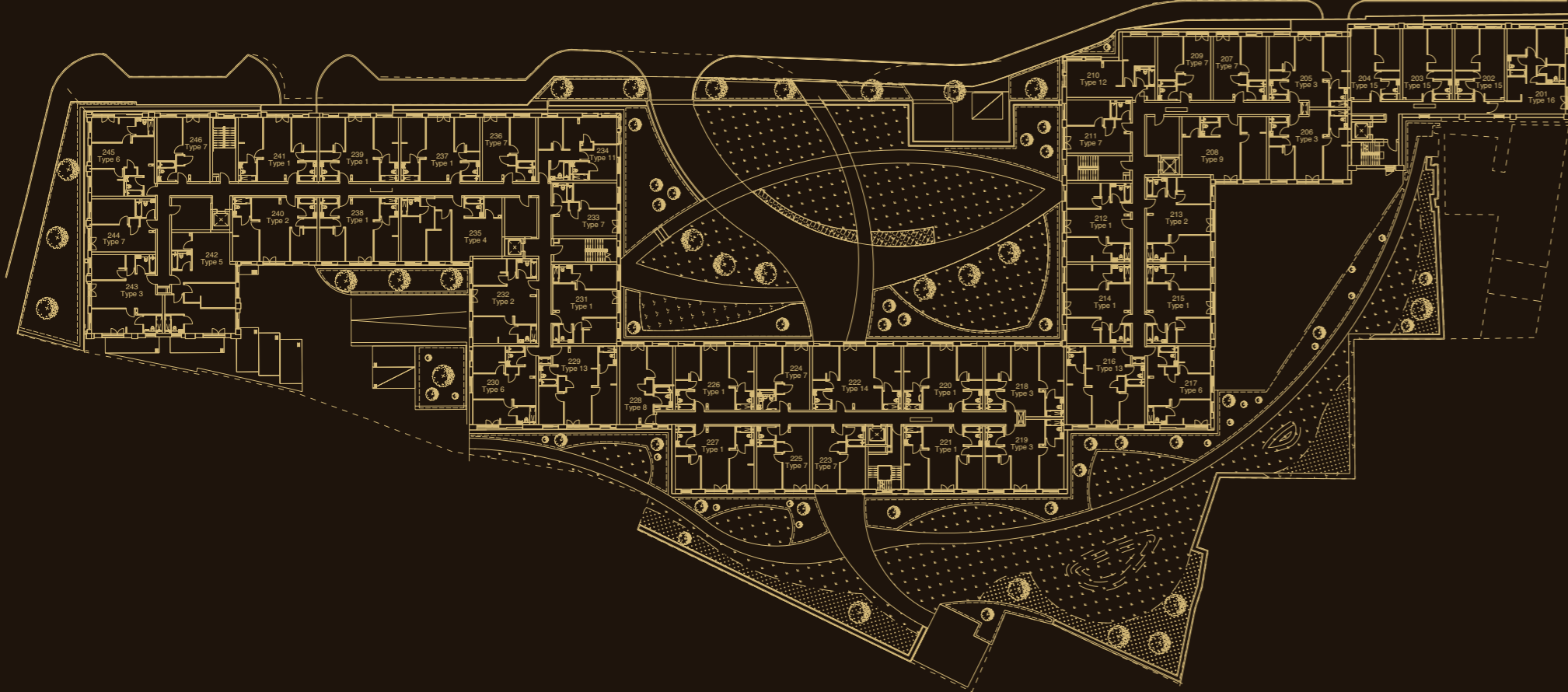
- 28 one bedroom apartments
- 18 two bedroom apartments



# SECOND FLOOR

APARTMENTS AVAILABLE ON THIS FLOOR

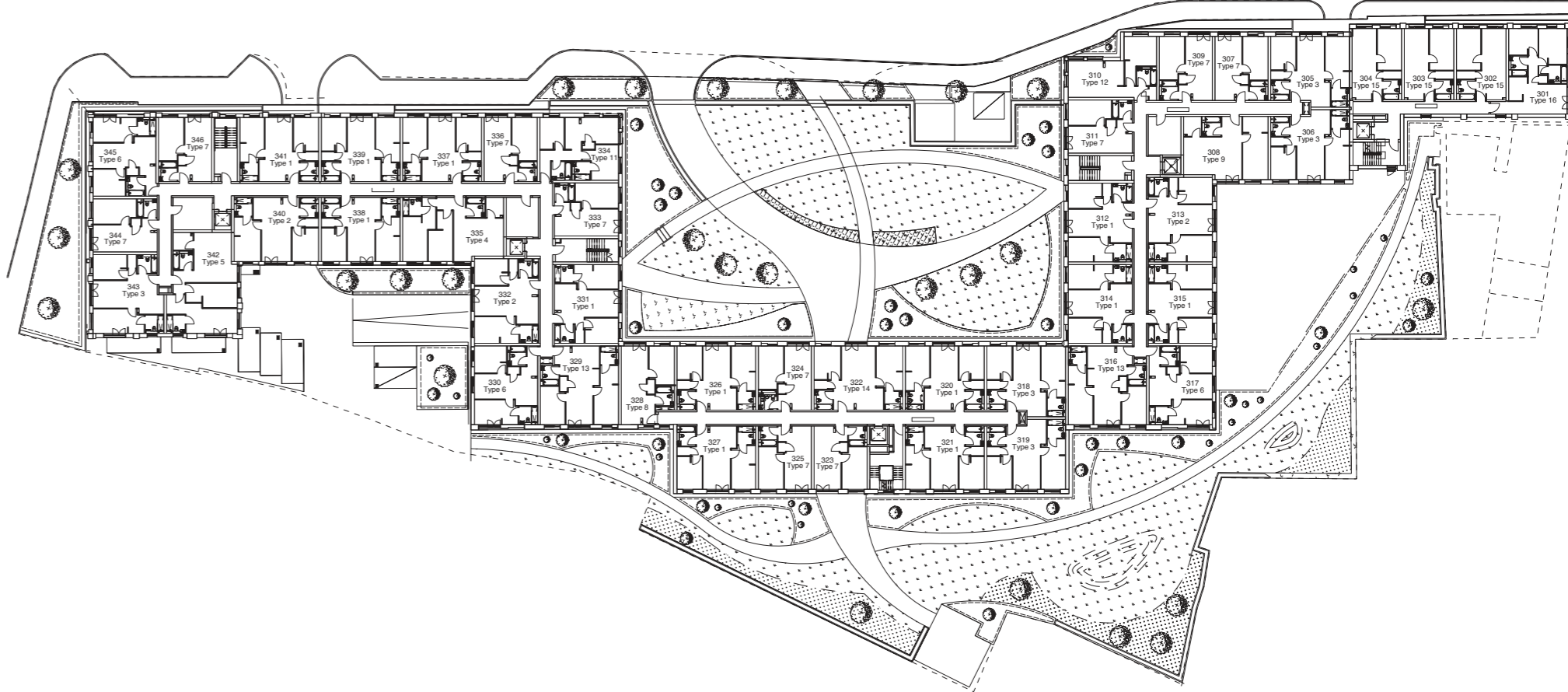
- 28 one bedroom apartments
- 18 two bedroom apartments



# THIRD FLOOR

APARTMENTS AVAILABLE ON THIS FLOOR

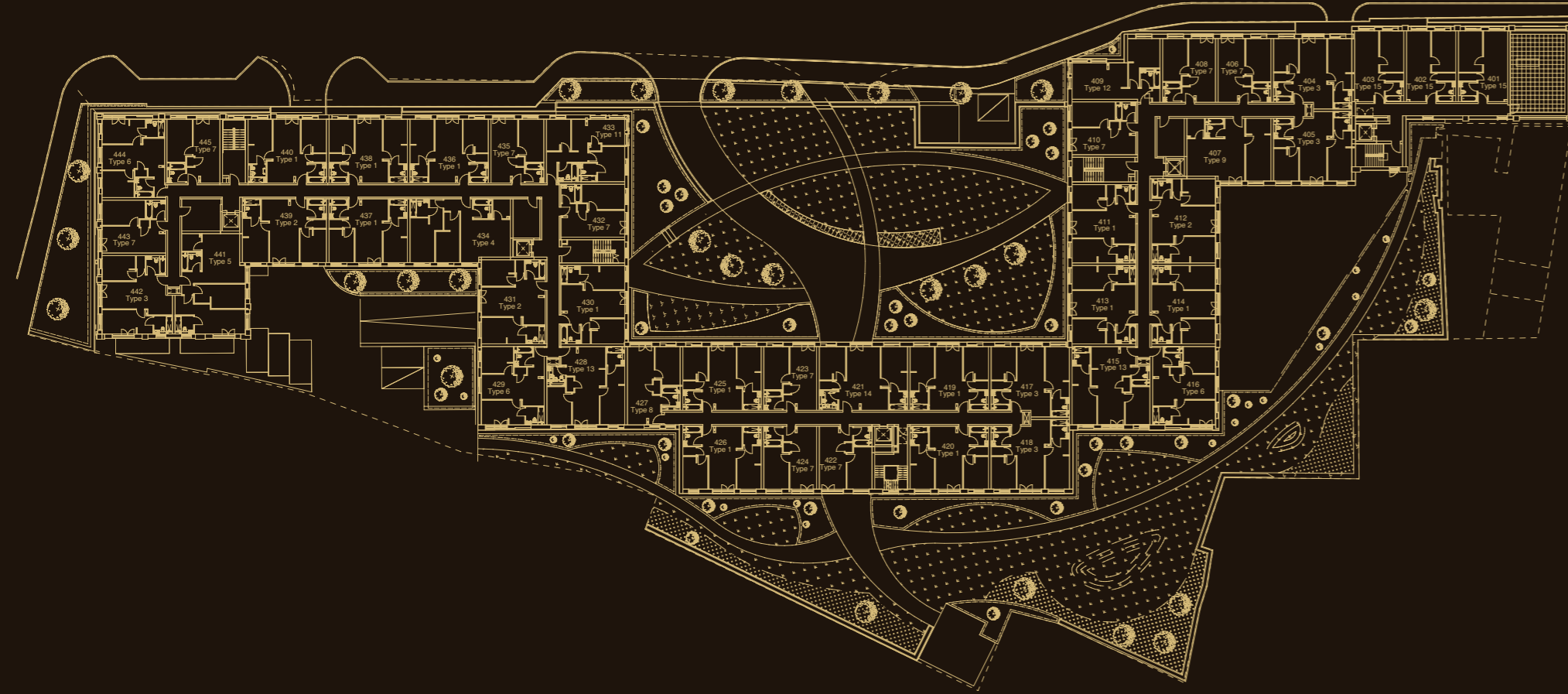
- 28 one bedroom apartments
- 18 two bedroom apartments



# FOURTH FLOOR

## APARTMENTS AVAILABLE ON THIS FLOOR

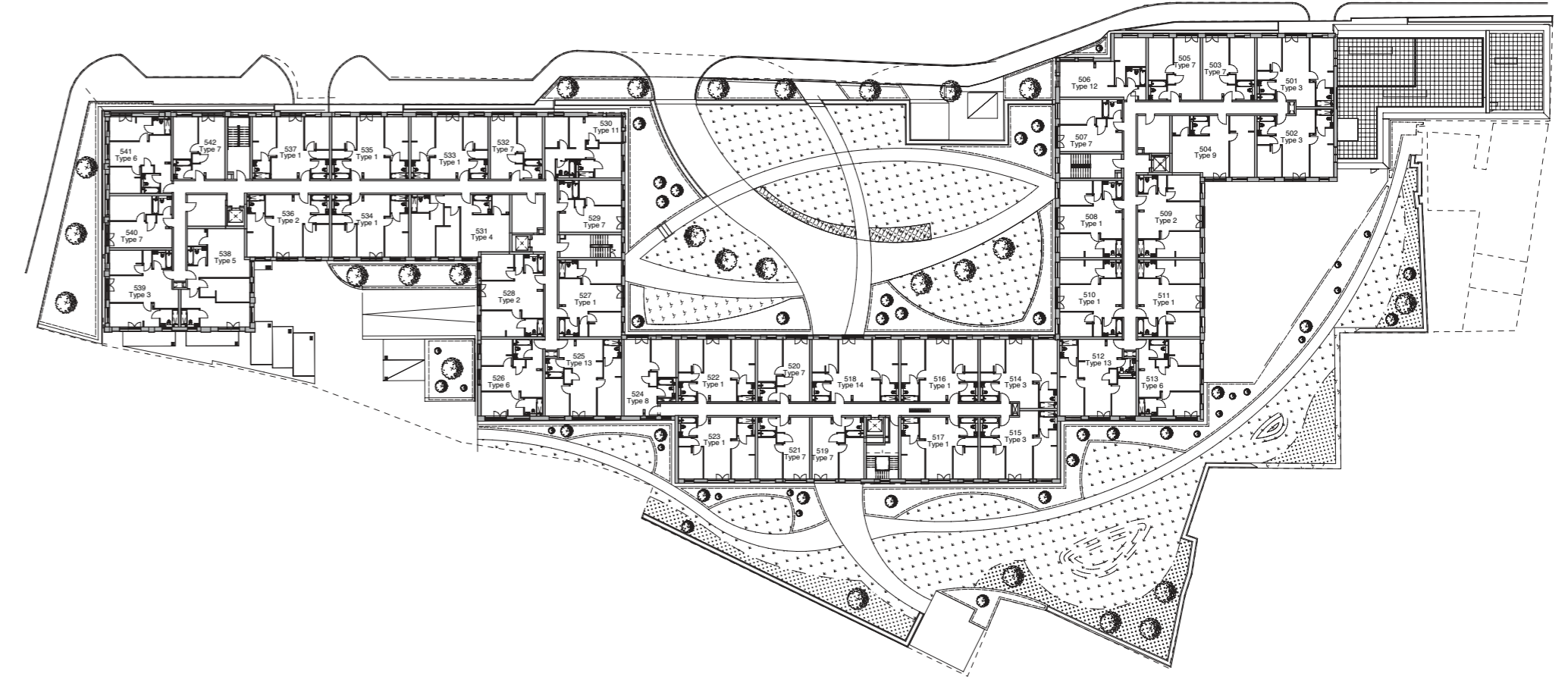
- 28 one bedroom apartments
- 17 two bedroom apartments



# FIFTH FLOOR

## APARTMENTS AVAILABLE ON THIS FLOOR

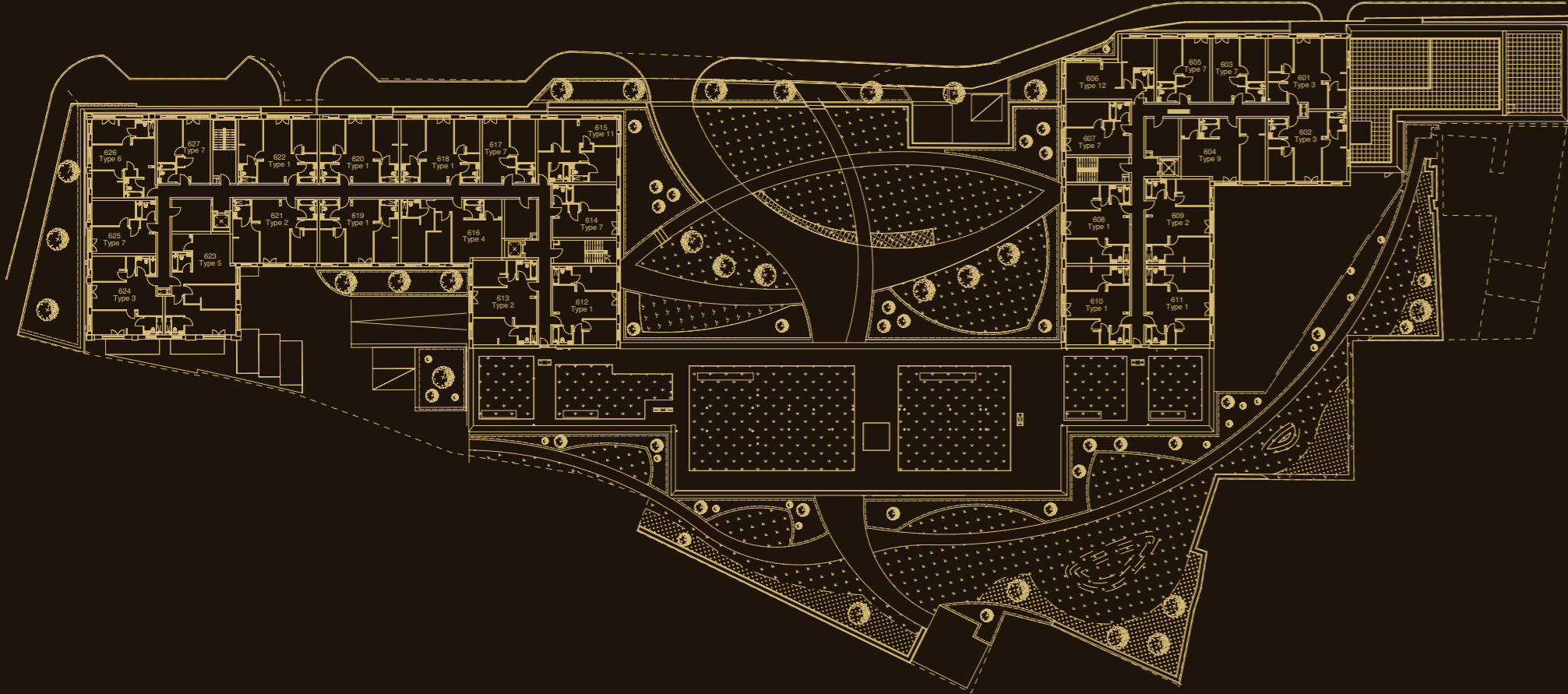
- 25 one bedroom apartments
- 17 two bedroom apartments



# SIXTH FLOOR

## APARTMENTS AVAILABLE ON THIS FLOOR

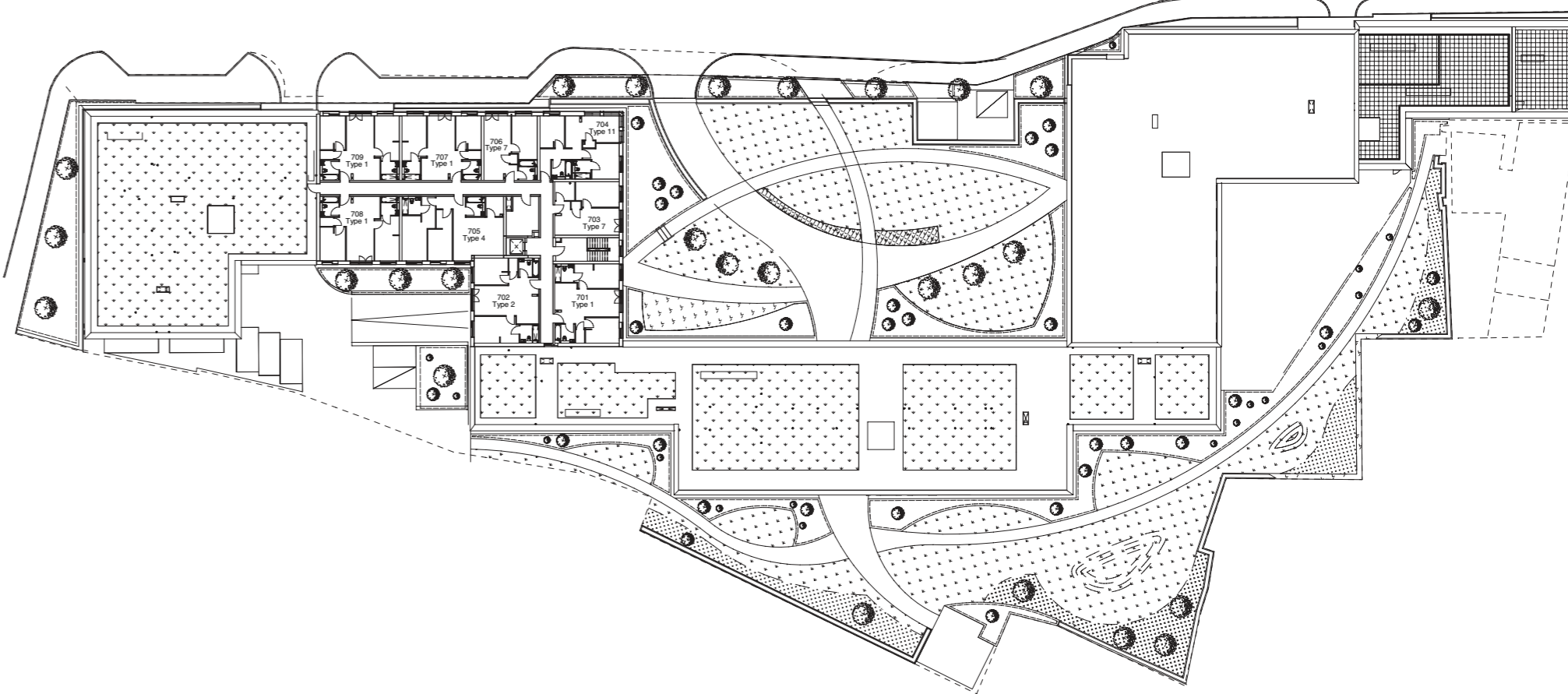
- 17 one bedroom apartments
- 10 two bedroom apartments



# SEVENTH FLOOR

## APARTMENTS AVAILABLE ON THIS FLOOR

- 6 one bedroom apartments
- 3 two bedroom apartments





# APARTMENT STYLE 1

## SPECIFICATION

- 2 bedroom - 2 bathroom
- Apartment size 688.9 sq ft

## ROOM DIMENSIONS

- Living/kitchen/dining room 290.6 sq ft
- Bedroom 1 16.4 x 9 ft
- Ensuite 6.9 x 6.8 ft
- Bedroom 2 12.5 x 9.4 ft
- Bathroom 7.4 x 6.9 ft

## APARTMENT AVAILABLE ON

Garden | First | Second | Third | Fourth | Fifth | Sixth | Seventh floors

## TYPE 1 APARTMENT NUMBERS:

14, 15, 20, 21, 24, 25, 35, 36, 112, 114, 115, 120, 121, 126, 127, 131, 137, 138, 139, 141, 212, 214, 215, 220, 221, 226, 227, 231, 237, 238, 239, 241, 312, 314, 315, 320, 321, 326, 327, 331, 337, 338, 339, 341, 411, 413, 414, 419, 420, 425, 426, 430, 436, 437, 438, 440, 508, 510, 511, 516, 517, 522, 523, 527, 533, 534, 535, 537, 608, 610, 611, 612, 618, 619, 620, 622, 701, 707, 708, 709.



# APARTMENT STYLE 2

## SPECIFICATION

- 2 bedroom - 2 bathroom
- Apartment size 742.7 sq ft

## ROOM DIMENSIONS

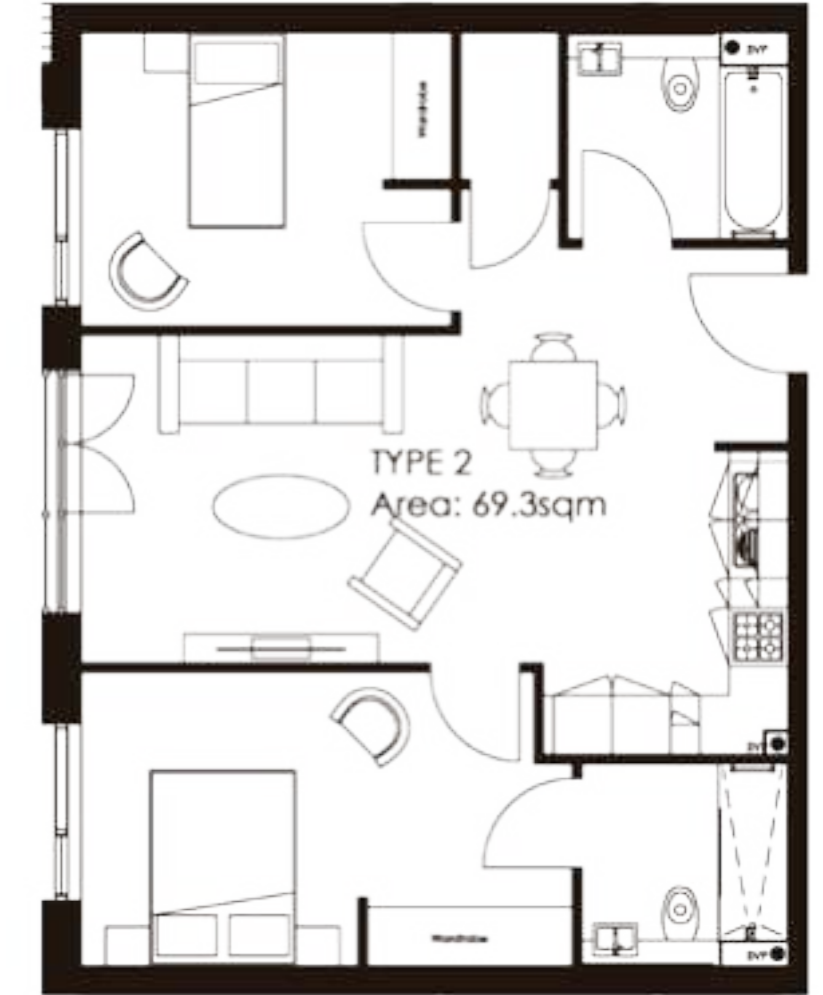
- Living/kitchen/dining room 322.9 Sq ft
- Bedroom 1 16.5 x 9.8 ft
- Ensuite 6.9 x 6.8 ft
- Bedroom 2 12.5 x 9.8 ft
- Bathroom 7.4 x 6.9 ft

## APARTMENT AVAILABLE ON

Garden | First | Second | Third | Fourth | Fifth | Sixth | Seventh floors

## TYPE 2 APARTMENT NUMBERS:

13, 30, 113, 132, 140, 213, 232, 240, 313, 332, 340, 412, 431, 439, 509, 528, 536, 609, 613, 621, 702



# APARTMENT STYLE 3

## SPECIFICATION

- 2 bedroom - 2 bathroom
- Apartment size 731.9 sq ft

## ROOM DIMENSIONS

- Living/kitchen/dining room 312.2 sq ft
- Bedroom 1 19 x 9 ft
- Ensuite 6.9 x 6.8 ft
- Bedroom 2 12.5 x 9.4 ft
- Bathroom 7.4 x 6.9 ft

## APARTMENT AVAILABLE ON

Garden | First | Second | Third | Fourth | Fifth | Sixth floors

## TYPE 3 APARTMENT NUMBERS:

5, 6, 18, 19, 105, 106, 118, 119, 143, 205, 206, 218, 219, 243, 305, 306, 318, 319, 343, 404, 405, 417, 418, 442, 501, 502, 514, 515, 539, 601, 602, 624



# APARTMENT STYLE 4

## SPECIFICATION

- 2 bedroom - 2 bathroom
- Apartment size 861.1 sq ft

## ROOM DIMENSIONS

- Living/kitchen/dining room 333.7 sq ft
- Bedroom 1 16.7 x 9.2 ft
- Ensuite 6.9 x 6.8 ft
- Bedroom 2 18.5 x 9 ft
- Bathroom 7.4 x 6.9 ft

## APARTMENT AVAILABLE ON

Garden | First | Second | Third | Fourth | Fifth | Sixth | Seventh floors

## TYPE 4 APARTMENT NUMBERS:

34, 135, 235, 335, 434, 531, 616, 705



# APARTMENT STYLE 5

## SPECIFICATION

- 2 bedroom - 2 bathroom
- Apartment size 904.2 sq ft

## ROOM DIMENSIONS

- Living/kitchen/dining room 290.6 sq ft
- Bedroom 1 26.2 x 9.2 ft
- Ensuite 6.9 x 6.8 ft
- Bedroom 2 19 x 9 ft
- Bathroom 7.4 x 6.9 ft

## APARTMENT AVAILABLE ON

First | Second | Third | Fourth | Fifth | Sixth floors

## TYPE 5 APARTMENT NUMBERS:

142, 242, 342, 441, 538, 623



# APARTMENT STYLE 6

## SPECIFICATION

- 2 bedroom - 2 bathroom
- Apartment size 688.9 sq ft

## ROOM DIMENSIONS

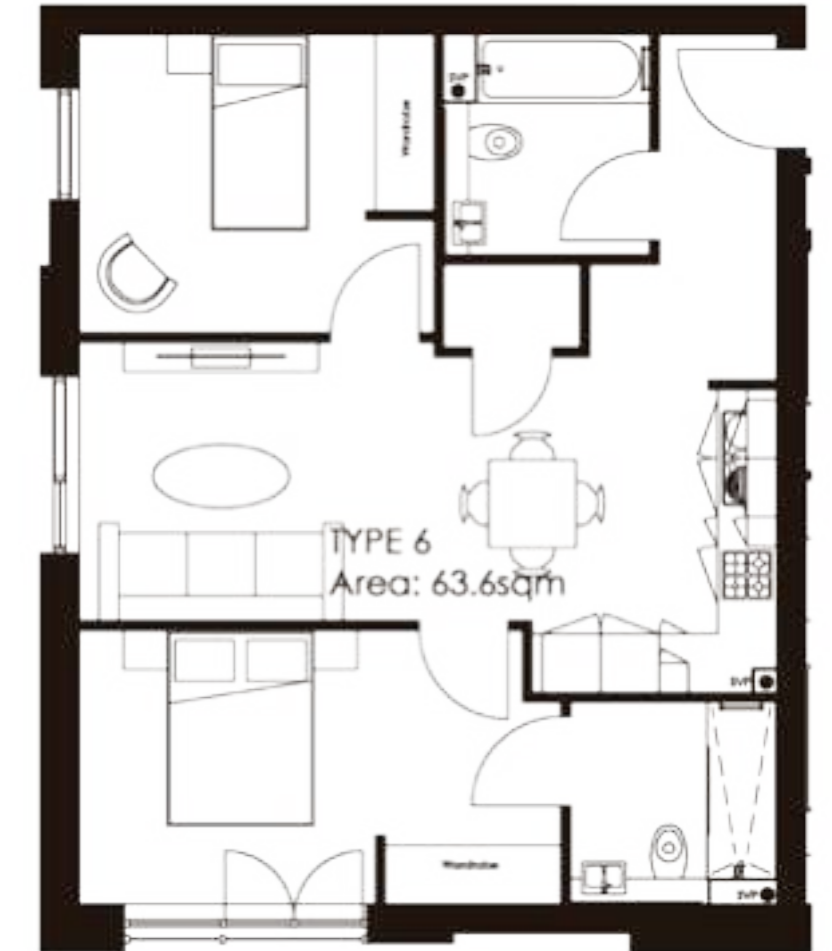
- Living/kitchen/dining room 279.9 sq ft
- Bedroom 1 16.2 x 9.2 ft
- Ensuite 6.9 x 8.7 ft
- Bedroom 2 11.9 x 10.0 ft
- Bathroom 7.4 x 6.9 ft

## APARTMENT AVAILABLE ON

Garden | First | Second | Third | Fourth | Fifth | Sixth floors

## TYPE 6 APARTMENT NUMBERS:

17, 28, 117, 130, 145, 217, 230, 245, 317, 330, 345, 416, 429, 444, 513, 526, 541, 626



# APARTMENT STYLE 7

## SPECIFICATION

- 1 bedroom - 1 bathroom
- Apartment size 462.8 sq ft

## ROOM DIMENSIONS

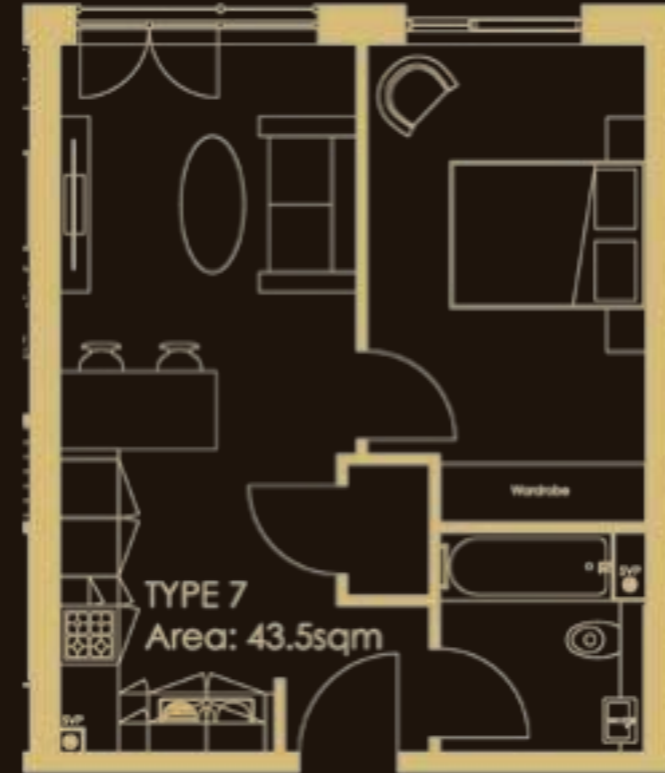
- Living/kitchen/dining room 247.6 sq ft
- Bedroom 16.1 x 9.4 ft
- Bathroom 7.4 x 6.9 ft

## APARTMENT AVAILABLE ON

Garden | First | Second | Third | Fourth | Fifth | Sixth | Seventh floors

## TYPE 7 APARTMENT NUMBERS:

7, 9, 11, 22, 23, 31, 33, 107, 109, 111, 123, 124, 125, 133, 136, 144, 146, 207, 209, 211, 223, 224, 225, 233, 236, 244, 246, 307, 309, 311, 323, 324, 325, 333, 336, 344, 346, 406, 408, 410, 422, 423, 424, 432, 435, 443, 445, 503, 505, 507, 519, 520, 521, 529, 532, 540, 542, 603, 605, 607, 614, 617, 625, 627, 703, 706



# APARTMENT STYLE 8

## SPECIFICATION

- 1 bedroom - 1 bathroom
- Apartment size 527.4 sq ft

## ROOM DIMENSIONS

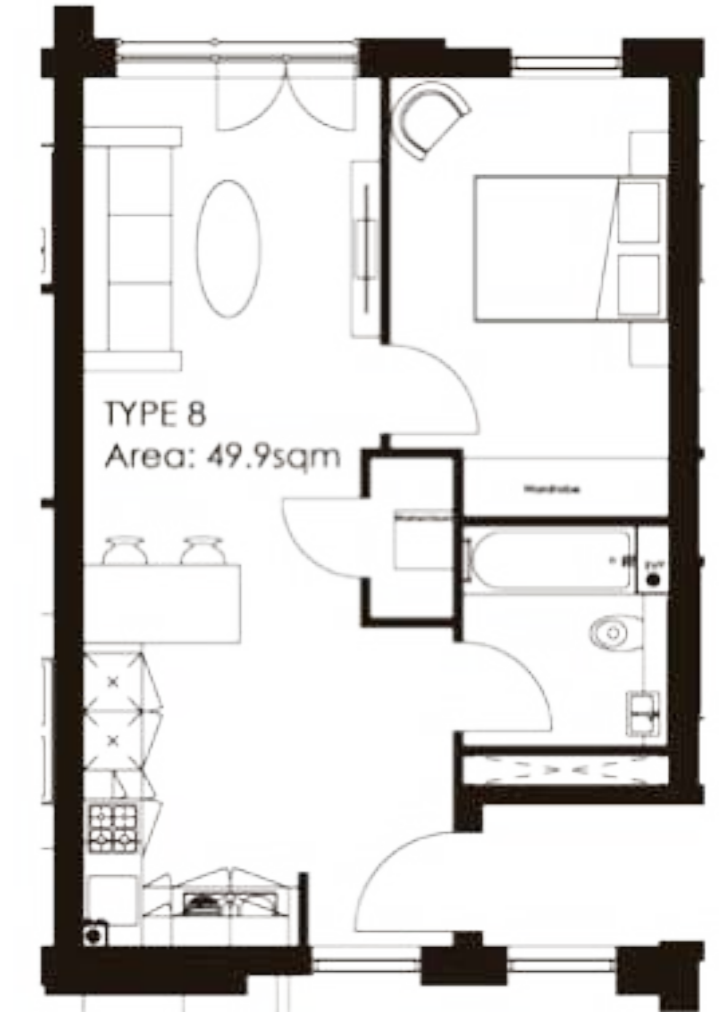
- Living/kitchen/dining room 312.2 sq ft
- Bedroom 14.7 x 9.4 ft
- Bathroom 7.4 x 6.9 ft

## APARTMENT AVAILABLE ON

Garden | First | Second | Third | Fourth | Fifth floors

## TYPE 8 APARTMENT NUMBERS:

26, 128, 228, 328, 427, 524



# APARTMENT STYLE 9

## SPECIFICATION

- 1 bedroom - 1 bathroom
- Apartment size 721.2 sq ft

## ROOM DIMENSIONS

- Living/kitchen/dining room 376.7 sq ft
- Bedroom 23.8 x 9.4 ft
- Bathroom 7.4 x 6.9 ft

## APARTMENT AVAILABLE ON

Garden | First | Second | Third | Fourth | Fifth | Sixth floors

## TYPE 9 APARTMENT NUMBERS:

8, 108, 208, 308, 407, 504, 604



# APARTMENT STYLE 10

## SPECIFICATION

- 1 bedroom - 1 bathroom
- Apartment size 549 sq ft

## ROOM DIMENSIONS

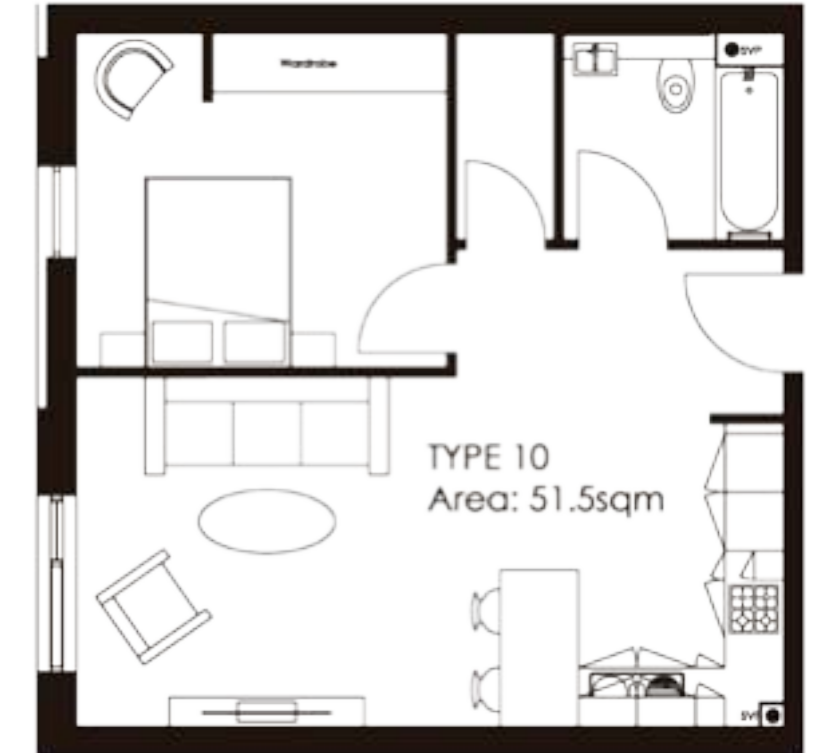
- Living/kitchen/dining room 322.9 sq ft
- Bedroom 12.5 x 11.2 ft
- Bathroom 7.4 x 6.9 ft

## APARTMENT AVAILABLE ON

Garden floor

## TYPE 10 APARTMENT NUMBERS:

12, 29



# APARTMENT STYLE 11

## SPECIFICATION

- 2 bedroom - 2 bathroom
- Apartment size 678.1 sq ft

## ROOM DIMENSIONS

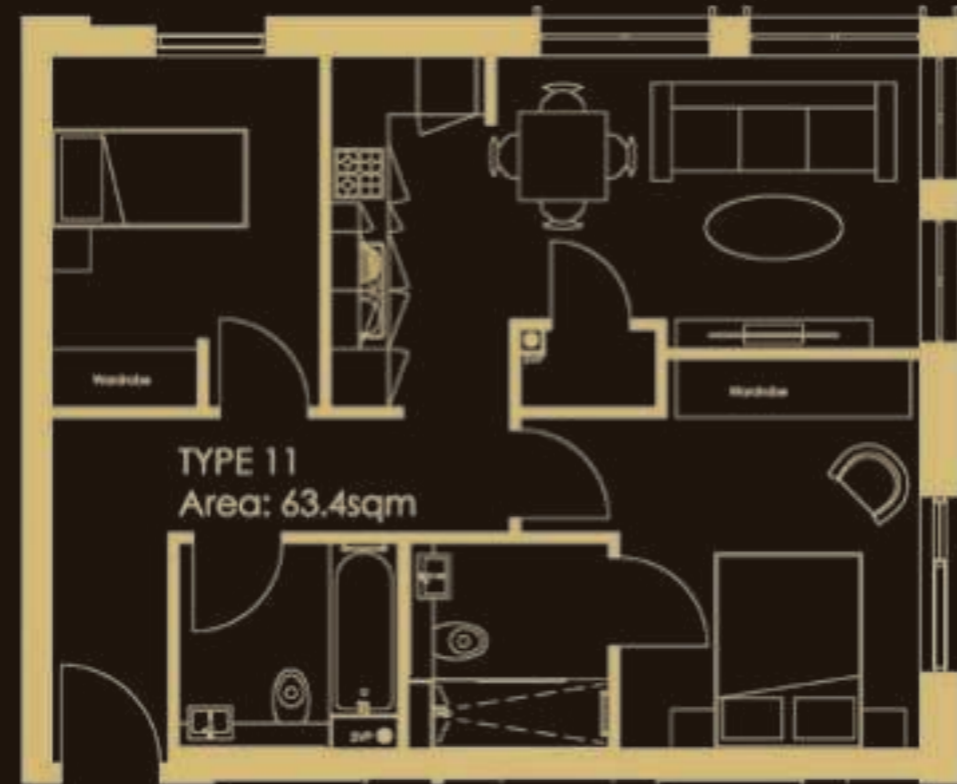
- Living/kitchen/dining room 204.5 sq ft
- Bedroom 1 13.1 x 10.1 ft
- Ensuite 6.9 x 6.8 ft
- Bedroom 2 11.8 x 9 ft
- Bathroom 7.4 x 6.9 ft

## APARTMENT AVAILABLE ON

Garden | First | Second | Third | Fourth | Fifth | Sixth | Seventh floors

## TYPE 11 APARTMENT NUMBERS:

32, 134, 234, 334, 433, 530, 615, 704



# APARTMENT STYLE 12

## SPECIFICATION

- 1 bedroom - 1 bathroom
- Apartment size 559.7 sq ft

## ROOM DIMENSIONS

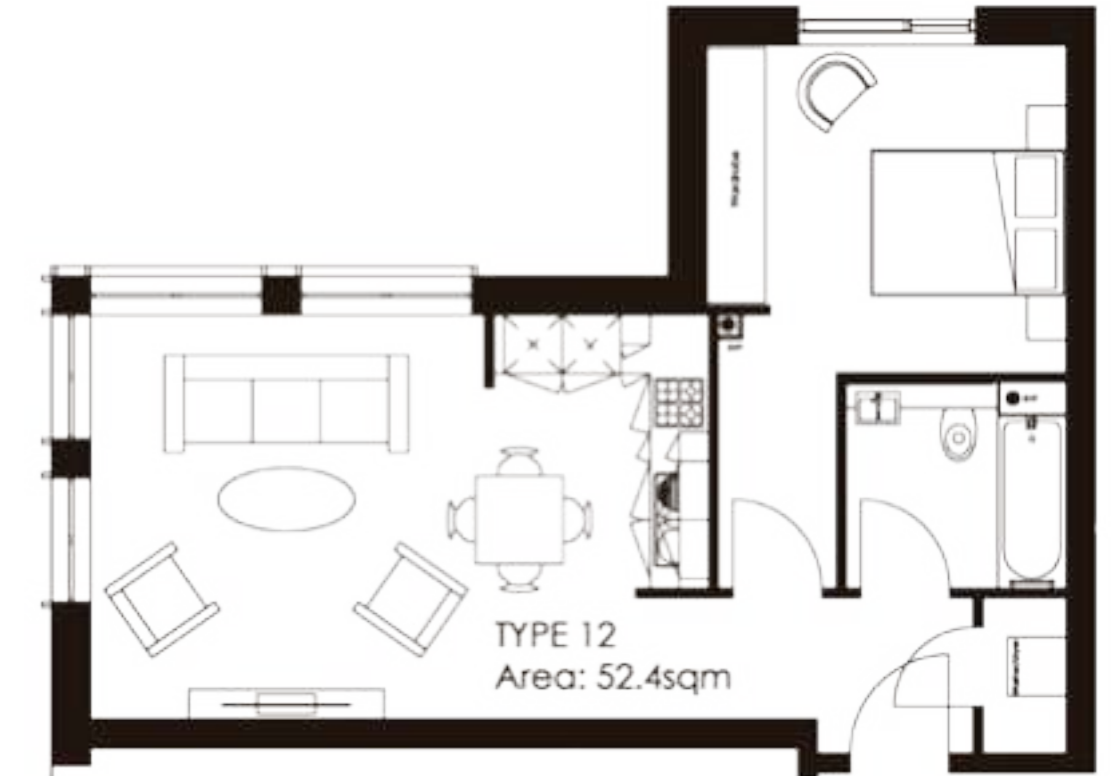
- Living/kitchen/dining room 279.9 sq ft
- Bedroom 12.1 x 11 ft
- Bathroom 7.4 x 6.9 ft

## APARTMENT AVAILABLE ON

Garden | First | Second | Third | Fourth | Fifth | Sixth floors

## TYPE 12 APARTMENT NUMBERS:

10, 110, 210, 310, 409, 506, 606



# APARTMENT STYLE 13

## SPECIFICATION

- 2 bedroom - 2 bathroom
- Apartment size 807.3 sq ft

## ROOM DIMENSIONS

- Living/kitchen/dining room 355.2 sq ft
- Bedroom 1 21.9 x 9.2 ft
- Ensuite 6.9 x 6.8 ft
- Bedroom 2 14.2 x 9.2 ft
- Bathroom 7.4 x 6.9 ft

## APARTMENT AVAILABLE ON

Garden | First | Second | Third | Fourth | Fifth floors

## TYPE 13 APARTMENT NUMBERS:

16, 27, 116, 129, 216, 229, 316, 329, 415, 428, 512, 525



# APARTMENT STYLE 14

## SPECIFICATION

- 2 bedroom - 2 bathroom
- Apartment size 785.8 sq ft

## ROOM DIMENSIONS

- Living/kitchen/dining room 366 sq ft
- Bedroom 1 16.5 x 9.8 ft
- Ensuite 6.9 x 6.8 ft
- Bedroom 2 12.5 x 9.8 ft
- Bathroom 7.4 x 6.9 ft

## APARTMENT AVAILABLE ON

First | Second | Third | Fourth | Fifth floors

## TYPE 14 APARTMENT NUMBERS:

122, 222, 322, 421, 518



# APARTMENT STYLE 15

## SPECIFICATION

- 1 bedroom - 1 bathroom
- Apartment size 484.4 sq ft

## ROOM DIMENSIONS

- Living/kitchen/dining room 258.3 sq ft
- Bedroom 15.4 x 9 ft
- Bathroom 7.4 x 6.9 ft

## APARTMENT AVAILABLE ON

Ground | Mezzanine | Garden | First | Second | Third | Fourth floors

## TYPE 15 APARTMENT NUMBERS:

G3, M2, M3, M4, 2, 3, 4, 102, 103, 104, 202, 203, 204, 302, 303, 304, 401, 402, 403



# APARTMENT STYLE 16

## SPECIFICATION

- 2 bedroom - 2 bathroom
- Apartment size 721.2 sq ft

## ROOM DIMENSIONS

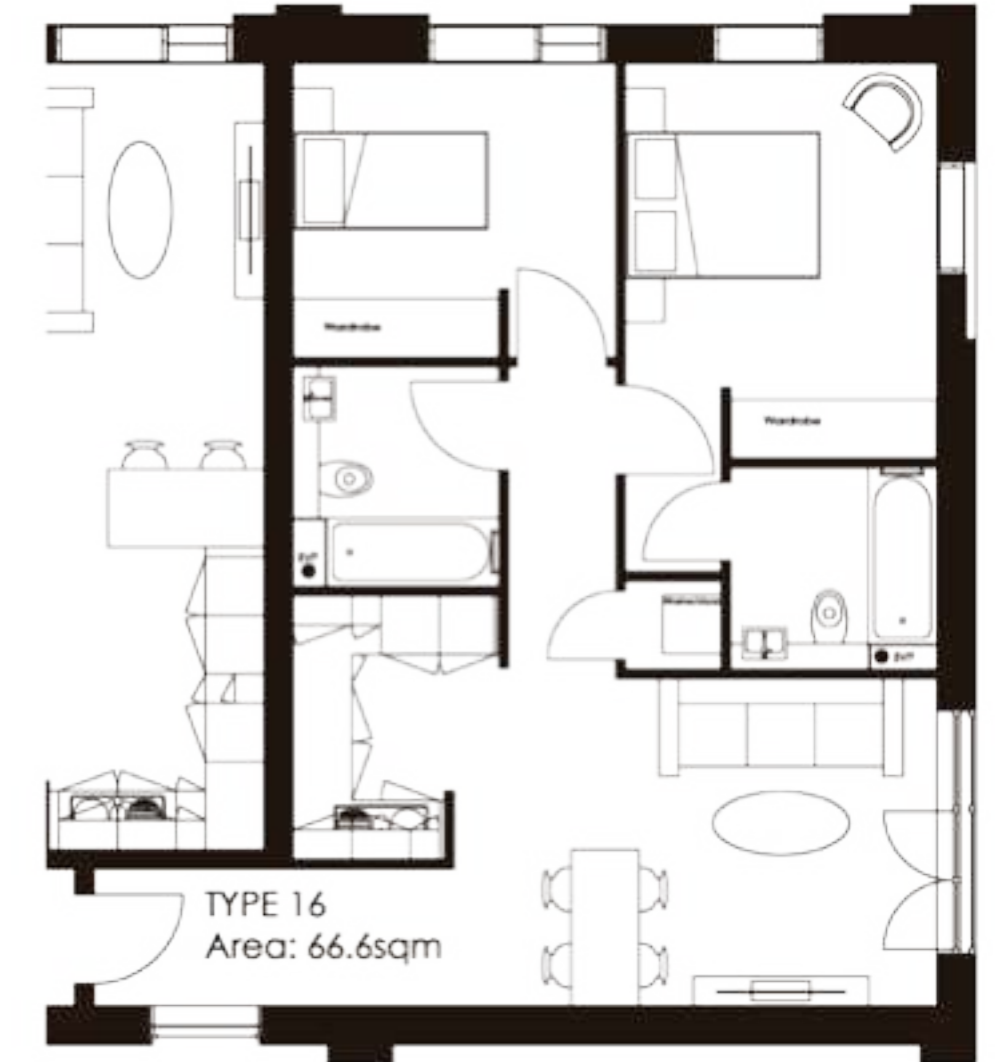
- Living/kitchen/dining room 322.9 sq ft
- Bedroom 1 13.3 x 10.5 ft
- Ensuite 6.9 x 6.8 ft
- Bedroom 2 9.9 x 10.9 ft
- Bathroom 7.4 x 6.9 ft

## APARTMENT AVAILABLE ON

Ground | Mezzanine | Garden | First | Second | Third floors

## TYPE 16 APARTMENT NUMBERS:

G1, M1, 1, 101, 201, 301





# APARTMENT STYLE 17

## SPECIFICATION

- 2 bedroom - 2 bathroom
- Apartment size 828.8 sq ft

## ROOM DIMENSIONS

- Living/kitchen/dining room 376.7 sq ft
- Bedroom 1 19.2 x 9.4 ft
- Ensuite 6.9 x 6.8 ft
- Bedroom 2 14.9 x 9.4 ft
- Bathroom 7.4 x 6.9 ft

## APARTMENT AVAILABLE ON

Ground floor

## TYPE 17 APARTMENT NUMBERS:

G2



Importance Notice: The information provided in this brochure is for general reference only and should not be relied upon in anyway. Although high standards have been used in the preparation of the information, analysis, views and projects, no responsibility or liability whatsoever can be accepted by Top Capital Group or its appointed sales agents.  
Details are correct at time of print, October 2017.

Artist impressions are illustrative only.



THE  
**AXIUM**  
EXPERIENCE THE HEART OF THE CITY

**THE AXIUM**

WINDMILL ST, BIRMINGHAM B1 1NS

TO FIND OUT MORE INFORMATION ON THIS DEVELOPMENT,  
PLEASE CONTACT ONE OF OUR APPOINTED  
SALES AGENTS OR VISIT THE WEBSITE

**[WWW.THE-AXIUM.COM](http://WWW.THE-AXIUM.COM)**