



CL

Clayton
Building

46

Studios, 1 & 2 bedroom apartments
and 2 bedroom duplex apartments

THE GASWORKS

NEW YORK LIVING

HEWORTH GREEN - YORK



NEW YORK LIVING

THE GASWORKS IS YORK'S MOST ICONIC CITY CENTRE RESIDENTIAL DEVELOPMENT. FEATURING 215 APARTMENTS, EACH DESIGNED AND FINISHED TO THE HIGHEST SPECIFICATION.

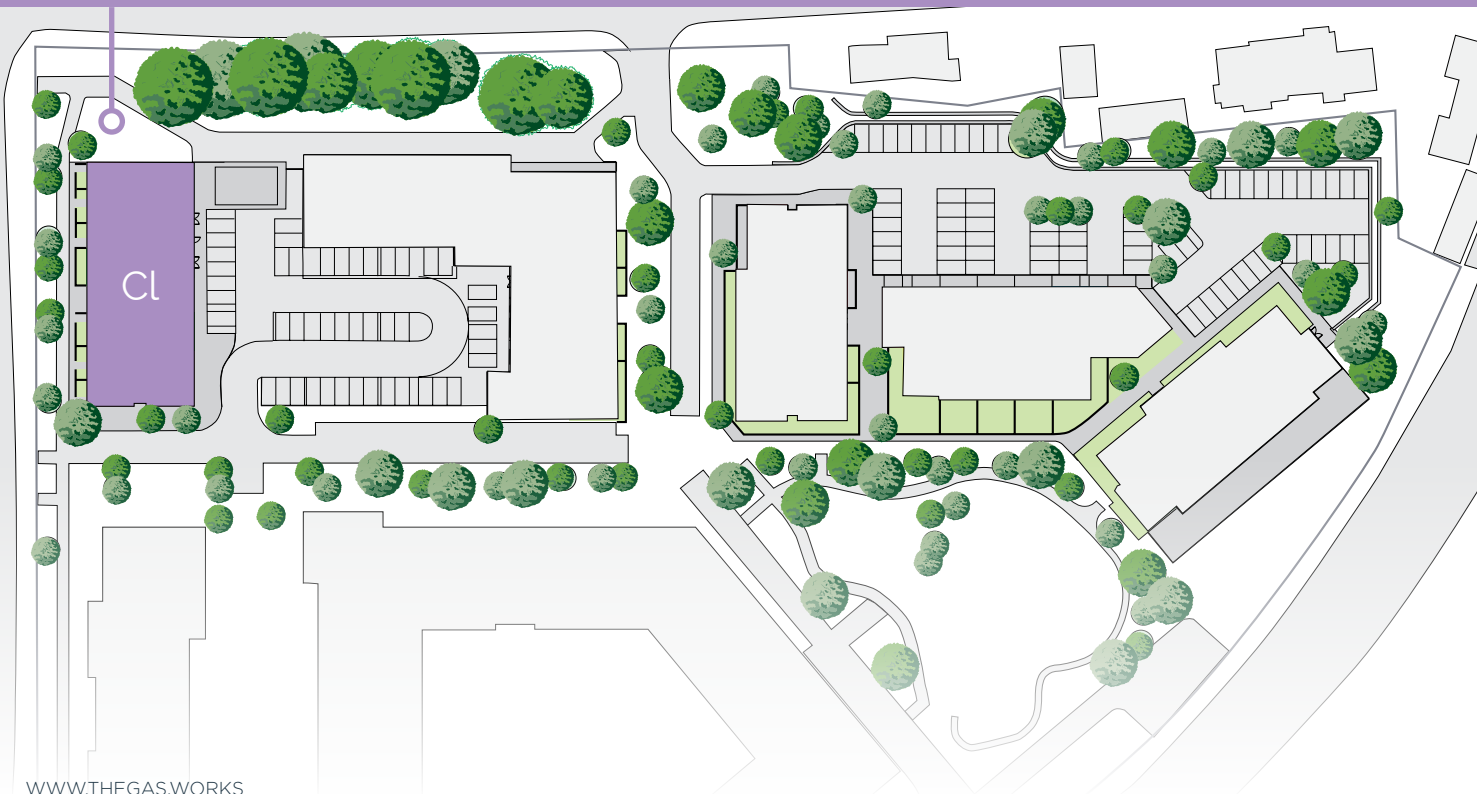
Comprising studios, one, two and three bedroom apartments and duplex apartments, The Gasworks offers York a new standard of luxury living, situated within nine acres of carefully landscaped grounds. Not only will residents get to enjoy a modern way of living, the onsite amenities will be second-to-none, offering a lifestyle that York has not yet offered.

Cl

Clayton Building

APARTMENT TYPES IN CLAYTON BUILDING:

11 Studios, 16 one bedroom, 13 two bedroom and 6 two bedroom duplex homes.



WWW.THEGAS.WORKS

THE GASWORKS

CL

11

Studio
Apartments

S

studio
apartments

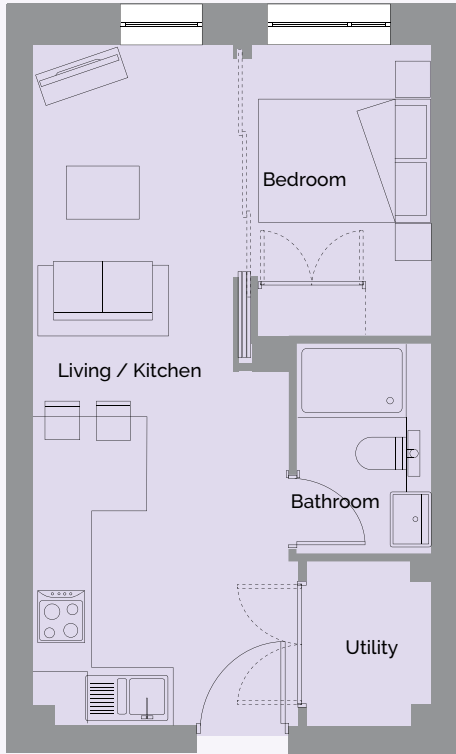


WWW.THEGAS.WORKS

THE GASWORKS



CLAYTON BUILDING
Studio Apartment Floorplans

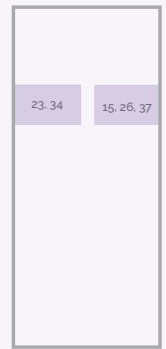


Studio 1a

PLOTS 15, 23, 26, 34, 37

Living / Kitchen	2.80 x 7.50	9'2" x 24'7"
Bedroom Area	1.95 x 3.20	6'4" x 10'5"

Overall 33m² | 355ft²

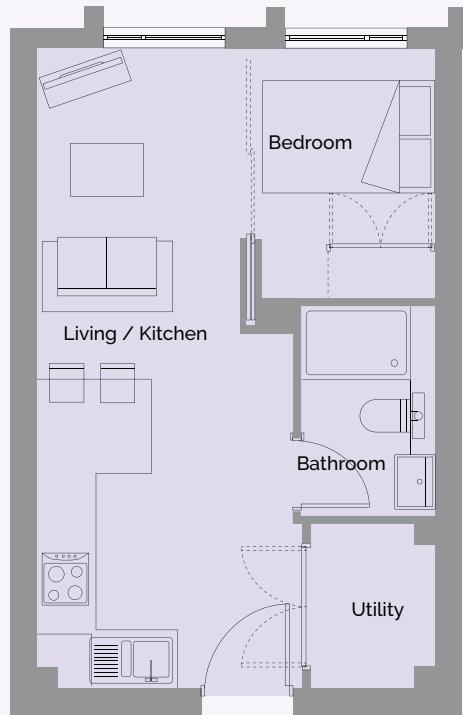
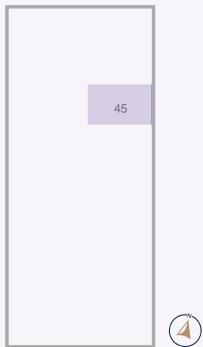


Studio 1b

PLOT 45

Living / Kitchen	2.90 x 7.05	9'6" x 23'1"
Bedroom Area	1.90 x 2.75	6'2" x 9'0"

Overall 31m² | 333ft²





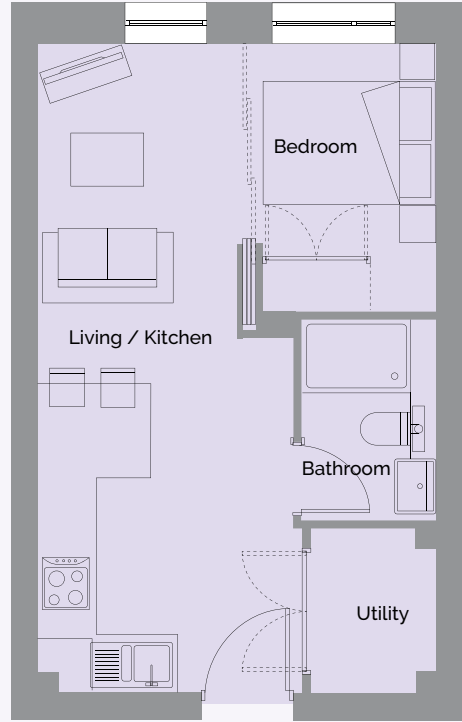
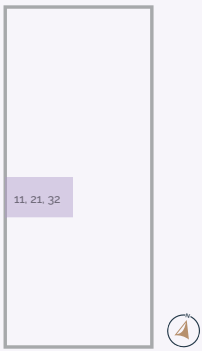
CLAYTON BUILDING
Studio Apartment Floorplans

Studio 1d

PLOTS 11, 21, 32

Living / Kitchen	2.91 x 7.15	9'6" x 23'5"
Bedroom Area	1.91 x 2.95	6'3" x 9'8"

Overall 31m² | 333ft²



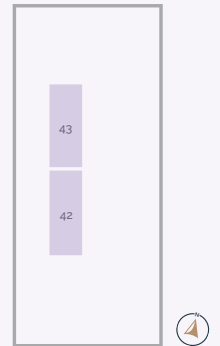
Studio 2b

PLOTS 42, 43

Living / Kitchen	5.22 x 3.50	17'1" x 11'5"
Bedroom Area	4.43 x 3.50	14'6" x 11'5"

Overall 34m² | 365ft²

Overall with terrace 69m² | 742ft²



Specification

KITCHENS

- Full range of kitchen units
- Quartz stone worktops and splash backs
- All appliances by Siemens
- Integrated bowl and drainer
- 4 ring induction hob: Home Connect TFT touch dual display light slider
- Integrated single pyrolytic oven with active clean black steel
- Extraction hood
- Integrated fridge/freezer (three quarter fridge)
- Integrated two-person dishwasher
- Under unit lighting
- LED spotlighting
- Integrated Hotpoint washer/dryer in hallway cupboard

BATHROOM

- All sanitary wares by Abacas
- Double ended bath with tileable bath panels
- White contemporary sanitary ware (concealed cisterns)
- Basins with vanity cupboard
- Ecostat S thermostatic shower mixer for 2 outlets
- Mira Flight safe anti-slip shower 1200x900mm shower tray & Nova frameless enclosure with sliding door
- Heated towel rail
- Hansgrohe Chrome fittings
- Focus single lever basin mixer taps
- Focus single lever bath mixer taps
- Full tiling with a feature marble wall by Meridian
- De-mister mirror to recessed cupboard
- Underfloor heated tiled floor / Natural oak porcelain

BEDROOM

- Fitted wardrobe with recessed lighting

GENERAL

- Acoustic double glazing
- Oak floors to living areas
- Carpeting to bedrooms
- LED lighting throughout
- Sockets and switches to be brushed stainless steel
- High quality internal doors
- Polished chrome ironmongery
- Moulded skirtings and architraves to compliment
- Fire protection sprinkler system
- Electric heating system throughout, underfloor heating to bathrooms
- Conveniently placed lifts in each block to all upper floors (10 person)
- Broadband/tv/satellite systems.
- Fibre optic CCTV

EXTERNAL

- Daytime on-site concierge.
- Security controlled entrance doors to each block with video link to each apartment
- Postal delivery system and parcel drop point
- Parking available on application
- Right to visitor parking
- Electric car charging points.
- Conveniently placed refuse facilities to each block
- Secure covered cycle stores
- Membership of on-site leisure facilities
- High quality soft and hard landscaping to communal areas.
- Secure gated vehicular and pedestrian accesses

Cl

16

1 Bed
Apartments

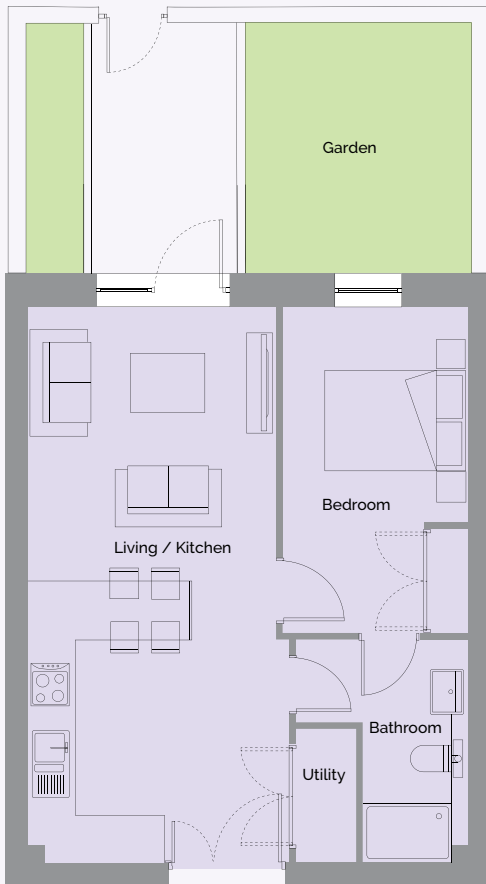
1

bedroom
apartments



WWW.THEGAS.WORKS

THE GASWORKS



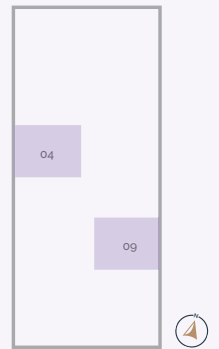
One Bedroom 1a

PLOTS 4, 9 (please note plot 9 does not have a garden)

Living / Kitchen	3.35 x 7.50	10'11" x 24'7"
Bedroom	2.50 x 4.40	8'2" x 14'5"

Overall 45m² | 484ft²

Overall with garden 63m² | 678ft²

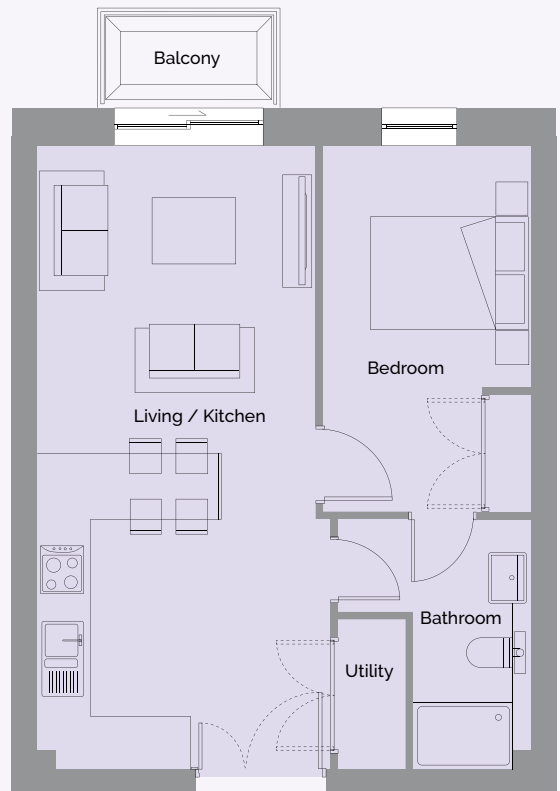
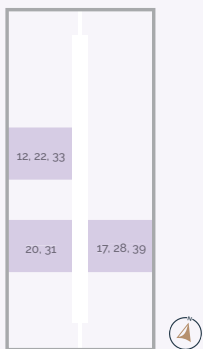


One Bedroom 1b

PLOTS 12, 17, 20, 22, 28, 31, 33, 39

Living / Kitchen	3.35 x 7.50	10'11" x 24'7"
Bedroom	2.50 x 4.40	8'2" x 14'5"

Overall 45m² | 484ft²





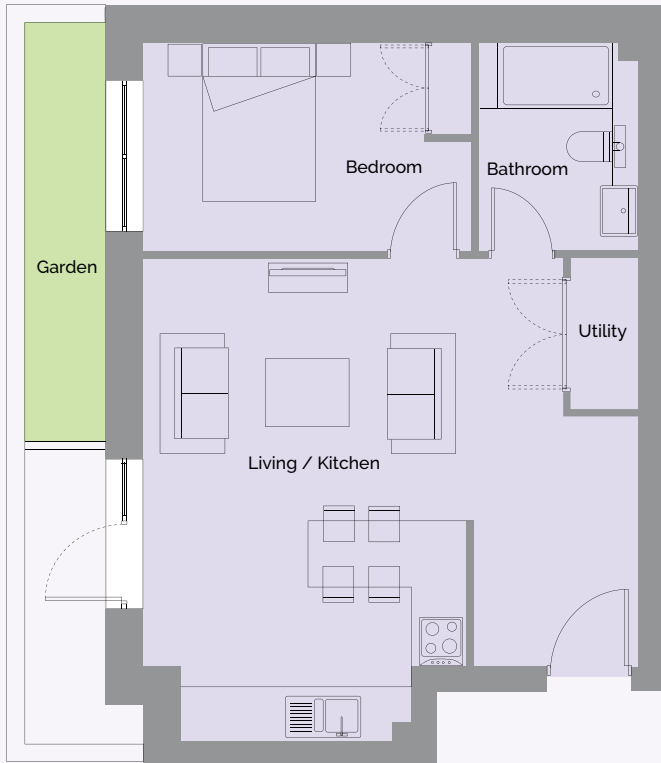
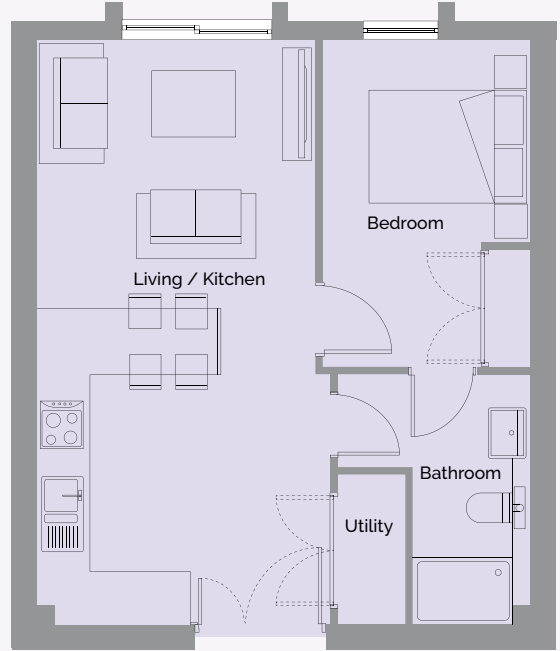
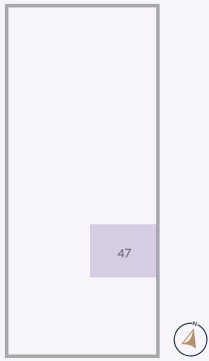
CLAYTON BUILDING
One Bedroom Apartment Floorplans

One Bedroom 1c

PLOT 47

Living / Kitchen	3.35 x 7.05	10'11" x 23'1"
Bedroom	2.50 x 3.95	8'2" x 12'11"

Overall 42m² | 452ft²



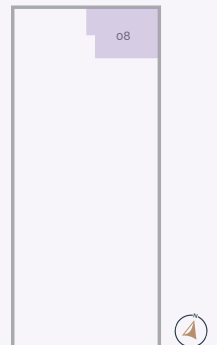
One Bedroom 6b

PLOT 8

Living / Kitchen	5.95 x 4.90	19'6" x 16'0"
Bedroom	3.94 x 2.50	12'11" x 8'2"

Overall 47m² | 505ft²

Overall with garden 54m² | 581ft²



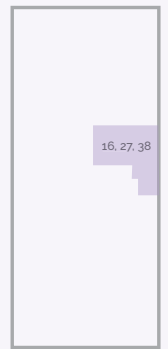


One Bedroom 7a

PLOTS 16, 27, 38

Living / Kitchen	3.77 x 7.50	12'4" x 24'7"
Bedroom	3.96 x 2.89	12'11" x 9'5"

Overall 42m² | 452ft²

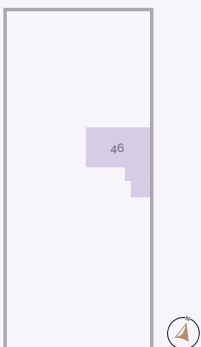


One Bedroom 7b

PLOT 46

Living / Kitchen	3.47 x 7.05	11'4" x 23'1"
Bedroom	4.83 x 2.44	15'10" x 8'0"

Overall 39m² | 419ft²



Specification

KITCHENS

- Full range of kitchen units
- Quartz stone worktops and splash backs
- All appliances by Siemens
- Integrated bowl and drainer
- 4 ring induction hob: Home Connect TFT touch dual display light slider
- Integrated single pyrolytic oven with active clean black steel
- Extraction hood
- Integrated fridge/freezer (three quarter fridge)
- Integrated two-person dishwasher
- Under unit lighting
- LED spotlighting
- Integrated Hotpoint washer/dryer in hallway cupboard

BATHROOM

- All sanitary wares by Abacas
- Double ended bath with tileable bath panels
- White contemporary sanitary ware (concealed cisterns)
- Basins with vanity cupboard
- Ecostat S thermostatic shower mixer for 2 outlets
- Mira Flight safe anti-slip shower 1200x900mm shower tray & Nova frameless enclosure with sliding door
- Heated towel rail
- Hansgrohe Chrome fittings
- Focus single lever basin mixer taps
- Focus single lever bath mixer taps
- Full tiling with a feature marble wall by Meridian
- De-mister mirror to recessed cupboard
- Underfloor heated tiled floor / Natural oak porcelain

BEDROOM

- Fitted wardrobe with recessed lighting

GENERAL

- Acoustic double glazing
- Oak floors to living areas
- Carpeting to bedrooms
- LED lighting throughout
- Sockets and switches to be brushed stainless steel
- High quality internal doors
- Polished chrome ironmongery
- Moulded skirtings and architraves to compliment
- Fire protection sprinkler system
- Electric heating system throughout, underfloor heating to bathrooms
- Conveniently placed lifts in each block to all upper floors (10 person)
- Broadband/tv/satellite systems.
- Fibre optic CCTV

EXTERNAL

- Daytime on-site concierge.
- Security controlled entrance doors to each block with video link to each apartment
- Postal delivery system and parcel drop point
- Parking available on application
- Right to visitor parking
- Electric car charging points.
- Conveniently placed refuse facilities to each block
- Secure covered cycle stores
- Membership of on-site leisure facilities
- High quality soft and hard landscaping to communal areas.
- Secure gated vehicular and pedestrian accesses

CL

19

2 Bed
Apartments

6 of which
are Duplex

2

bedroom
apartments
Plus Duplex

WWW.THEGASWORKS

THE GASWORKS



CLAYTON BUILDING

Two Bedroom Apartment Floorplans



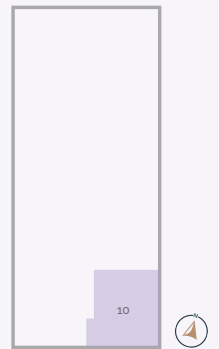
Two Bedroom 1f

PLOT 10

Living / Kitchen	3.90 x 8.40	12'9" x 27'6"
Bedroom 1	2.65 x 5.20	8'8" x 17'0"
Bedroom 2	2.75 x 4.39	9'0" x 14'4"

Overall 68m² | 731ft²

Overall with garden 77m² | 828ft²



Two Bedroom 1g

PLOTS 14, 24, 25, 35, 36

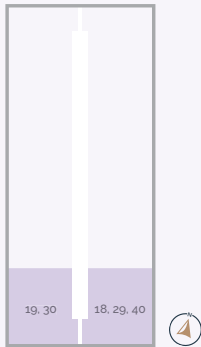
Living / Kitchen	4.19 x 8.40	13'8" x 27'6"
Bedroom 1	2.65 x 5.20	8'8" x 17'0"
Bedroom 2	2.75 x 4.39	9'0" x 14'4"

Overall 71m² | 764ft²





CLAYTON BUILDING
Two Bedroom Apartment Floorplans



Two Bedroom 1h

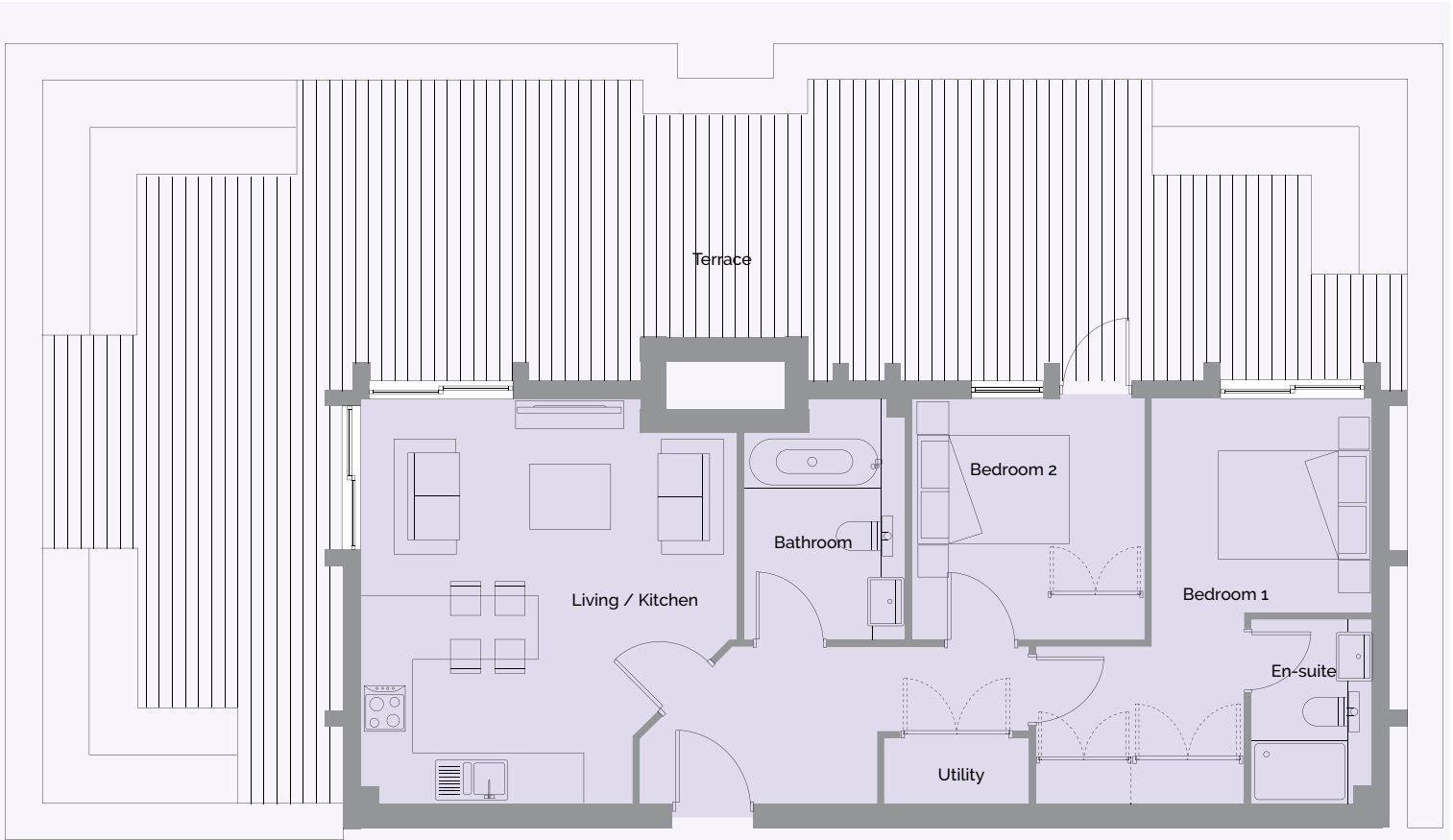
PLOTS 18, 19, 29, 30, 40

Living / Kitchen	3.90 x 8.40	12'9" x 27'6"
Bedroom 1	2.65 x 5.20	8'8" x 17'0"
Bedroom 2	2.75 x 4.39	9'0" x 14'4"

Overall 68m² | 731ft²



CLAYTON BUILDING
Two Bedroom Apartment Floorplans



Two Bedroom **9b**

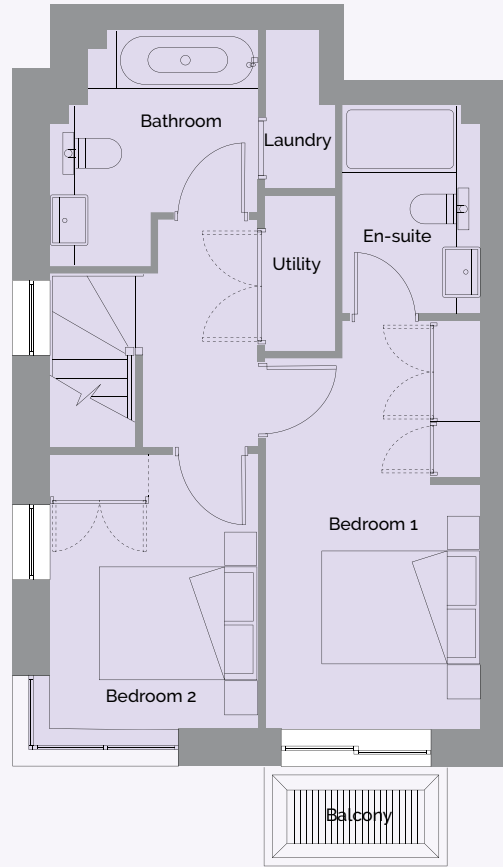
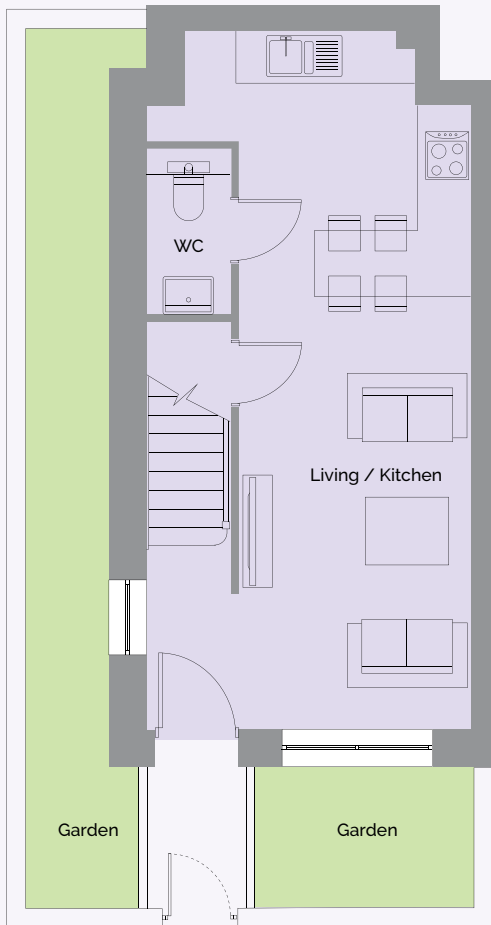
PLOT 44

Living / Kitchen	4.70 x 5.07	15'5" x 16'7"
Bedroom 1	2.75 x 5.07	9'0" x 9'10"
Bedroom 2	2.90 x 3.00	9'6" x 9'10"

Overall 63m² | 678ft²

Overall with terrace 142m² | 1528ft²

Two Bedroom Duplex Apartment Floorplans



Two Bedroom Duplex 1a

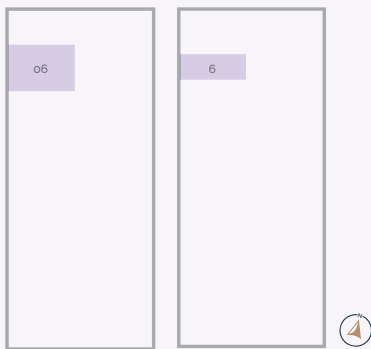
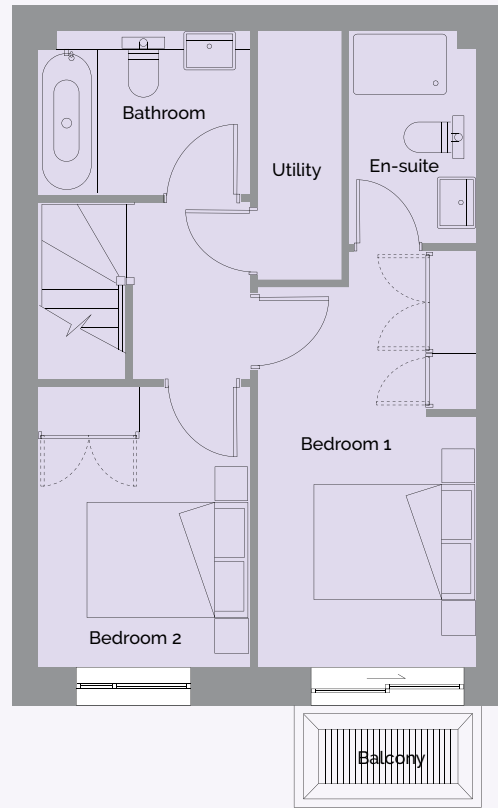
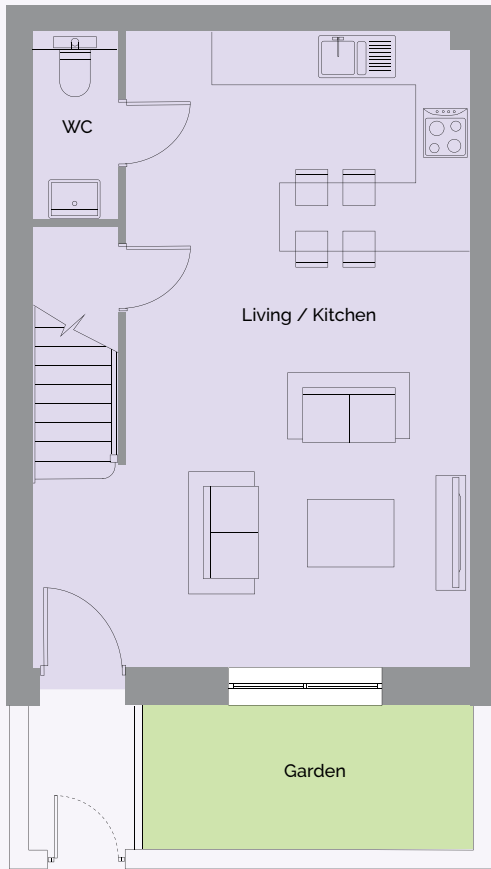
PLOT 1, 7

Living / Kitchen	3.90 x 8.40	12'9" x 27'6"
Bedroom 1	2.56 x 4.90	8'4" x 16'0"
Bedroom 2	2.50 x 3.30	8'2" x 10'9"

Overall 68m² | 731ft²

Overall with garden 93m² | 1001ft²

Two Bedroom Duplex Apartment Floorplans



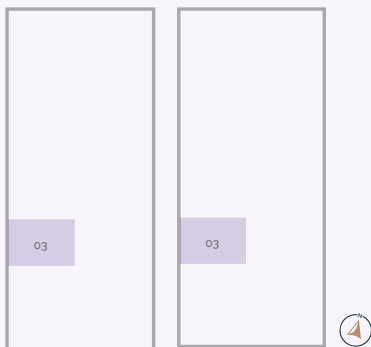
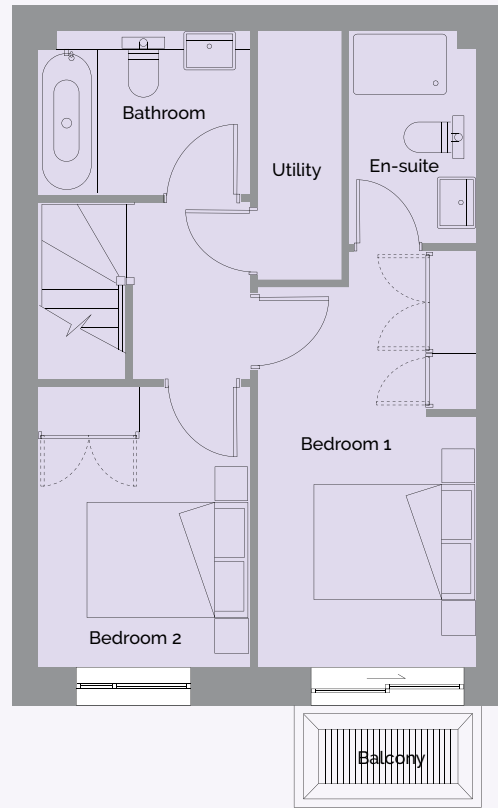
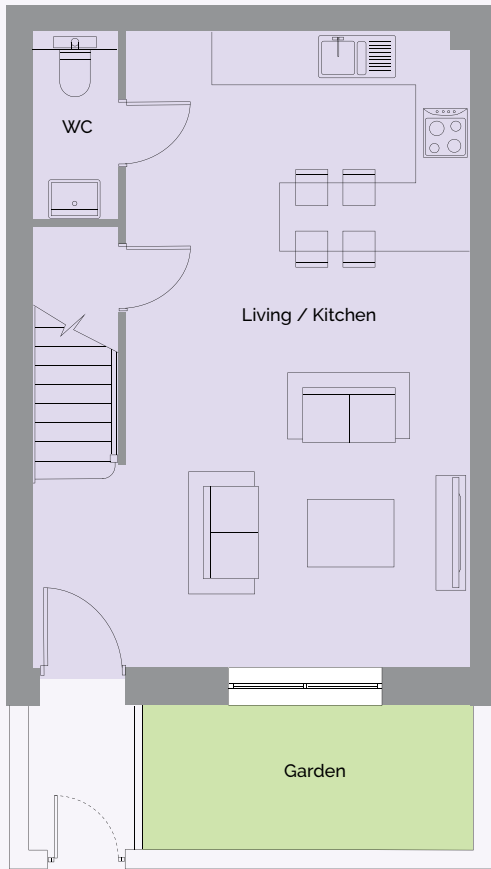
Two Bedroom Duplex 2a

PLOT 6

Living / Kitchen	4.05 x 7.50	13'3" x 24'7"
Bedroom 1	2.82 x 4.96	9'3" x 16'3"
Bedroom 2	2.40 x 3.06	7'10" x 10'0"

Overall 61m² | 656ft²

Overall with garden 70m² | 753ft²



Two Bedroom Duplex 3a

PLOT 3

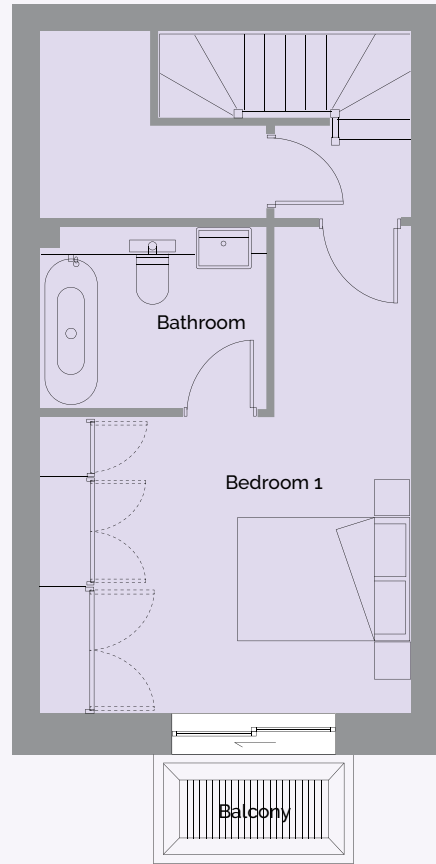
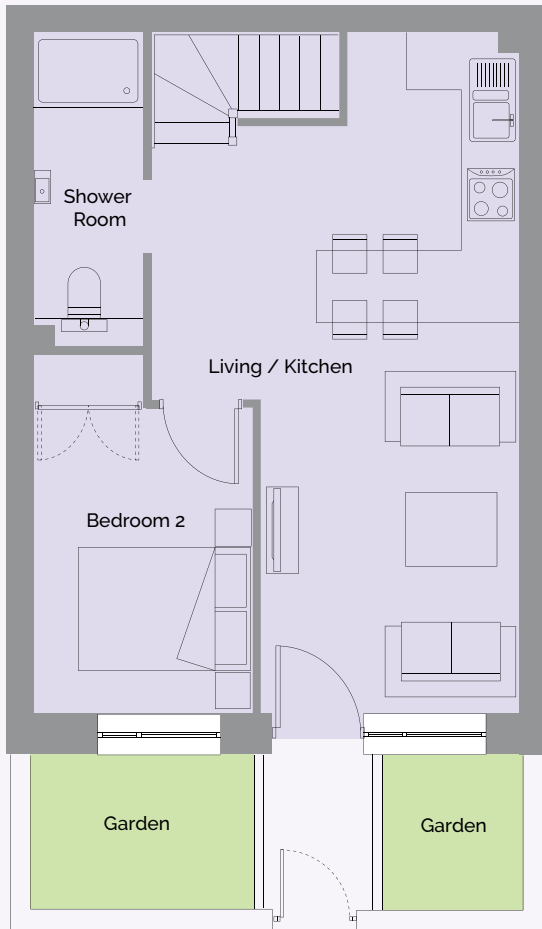
Living / Kitchen	5.16 x 7.50	16'11" x 24'7"
Bedroom 1	2.56 x 4.90	8'4" x 16'0"
Bedroom 2	2.50 x 3.30	8'2" x 10'9"

Overall 78m² | 839ft²

Overall with garden 87m² | 936ft²



Two Bedroom Duplex Apartment Floorplans



Two Bedroom Duplex 2b

PLOT 2

Living / Kitchen	4.05 x 7.50	13'3" x 24'7"
Bedroom 1	4.08 x 5.35	13'4" x 17'6"
Bedroom 2	2.40 x 3.36	7'10" x 11'0"

Overall 71m² | 764ft²

Overall with garden 80m² | 861ft²

Specification

KITCHENS

- Full range of kitchen units
- Quartz stone worktops and splash backs
- All appliances by Siemens
- Integrated bowl and drainer
- 4 ring induction hob: Home Connect TFT touch dual display light slider
- Integrated single pyrolytic oven with active clean black steel
- Extraction hood
- Integrated fridge/freezer (three quarter fridge)
- Integrated dishwasher
- Under unit lighting
- LED spotlighting
- Integrated Hotpoint washer/dryer in hallway cupboard

BATHROOM

- All sanitary wares by Abacas
- Double ended bath with tileable bath panels
- White contemporary sanitary ware (concealed cisterns)
- Basins with vanity cupboard
- Ecostat S thermostatic shower mixer for 2 outlets
- Mira Flight safe anti-slip shower 1200x900mm shower tray & Nova frameless enclosure with sliding door
- Heated towel rail
- Hansgrohe Chrome fittings
- Focus single lever basin mixer taps
- Focus single lever bath mixer taps
- Full tiling with a feature marble wall by Meridian
- De-mister mirror to recessed cupboard
- Underfloor heated tiled floor / Natural oak porcelain

BEDROOM

- Fitted wardrobes to beds 1 & 2 with recessed lighting

GENERAL

- Acoustic double glazing
- Oak floors to living areas
- Carpeting to bedrooms
- LED lighting throughout
- Sockets and switches to be brushed stainless steel
- High quality internal doors
- Polished chrome ironmongery
- Moulded skirtings and architraves to compliment
- Fire protection sprinkler system
- Electric heating system throughout, underfloor heating to bathrooms
- Conveniently placed lifts in each block to all upper floors (10 person)
- Broadband/tv/satellite systems.
- Fibre optic CCTV

EXTERNAL

- Daytime on-site concierge.
- Security controlled entrance doors to each block with video link to each apartment
- Postal delivery system and parcel drop point
- Parking available on application
- Right to visitor parking
- Electric car charging points.
- Conveniently placed refuse facilities to each block
- Secure covered cycle stores
- Membership of on-site leisure facilities
- High quality soft and hard landscaping to communal areas.
- Secure gated vehicular and pedestrian accesses